

# How to use MT5

---

Ver. 2018. 03. EN



TABLE OF  
CONTENTS

---

1. TOTAL VIEW

Main Menu  
Tools  
Toolbox  
Market Watch  
Navigator

2. TRANSACTION

Terminology  
How to Order  
Market Orders

3. CHART

Chart Property  
Chart Basic Setting  
Indicators

4. USER OPTION

Server  
Chart  
Trend Line  
Expert Advisors

5. SYSTEM TRADING

System Trading Execute(EA)  
Strategy Test

6. ETC OPTION

Shortcut  
Indicators

## 1. TOTAL VIEW

Main Menu

Tools

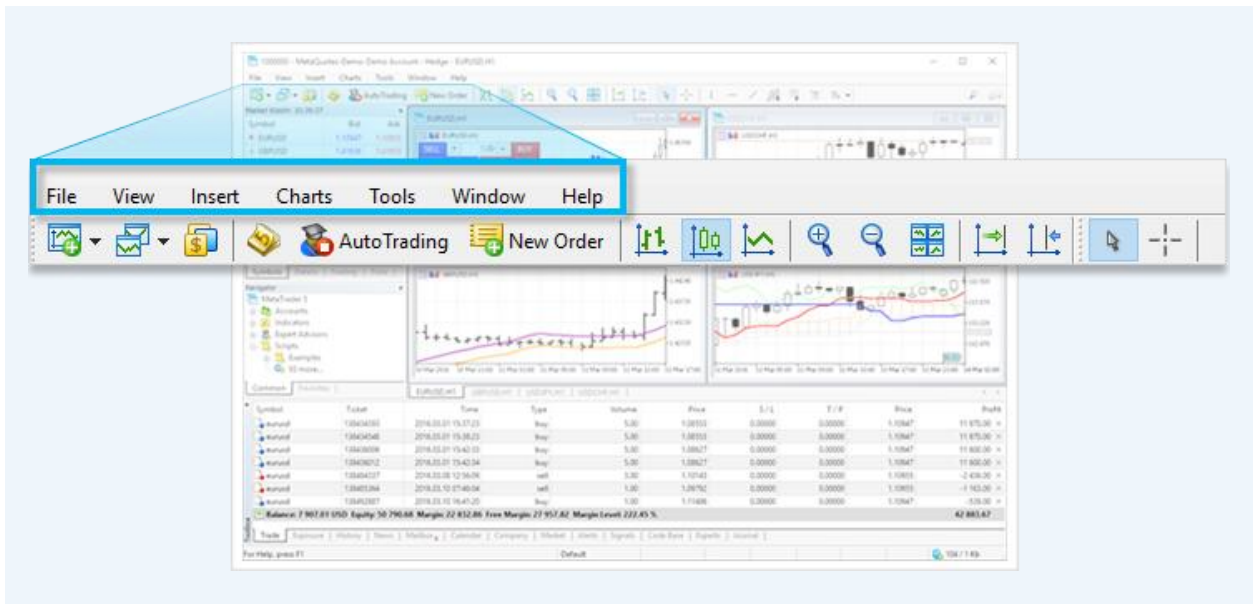
Toolbox

Market Watch

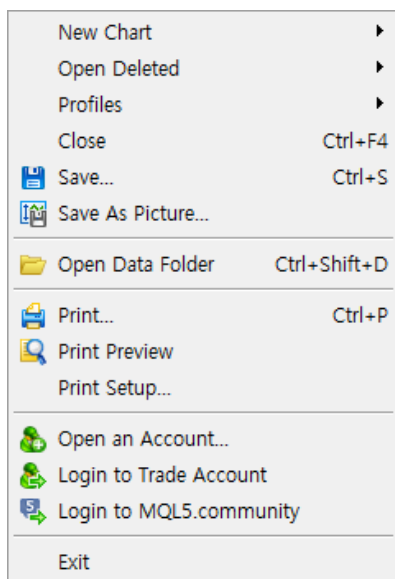
Navigator

Main Menu   Tools   Toolbox   Market Watch   Navigator

The main menu provided by MT5 can be divided into seven menus :  
 "File", "View", "Insert", "Charts", "Tools", "Window", "Help".



## File(F)



### New Chart

It opens new chart. A drop-down currency pair list appears allowing users to select the chart to be opened. By clicking a currency pair, a new currency chart pair will appear.

### Open Deleted

Deleted Chart can be recovered with this menu. Chart recovery will be available when "store deleted chart" has been selected at the Tools menu-option- Chart tab.

### Profiles

User can store/delete chart type and period. User also can execute the same function with tools group button as well as previously stored ones can be downloaded.

### Close

Closes active chart in MT5. Shortcut <Ctrl+W> or <Ctrl+F4>.

### Save As Picture

Chart data can be saved in the form of "JPG File", Shortcut <Ctrl+S>.

### Open Data Folder

It opens the saved data folder in your computer. Saved folder as its data, price history, configuration files, MQL4 programs, etc. User can execute the same function with shortcut <Ctrl+Shift+D>

Main Menu   Tools   Toolbox   Market Watch   Navigator

### Print

Print function. User can choose color/black and white at Tools-option-chart. User can execute the same function with 'Right click – print. Shortcut <Ctrl+P>.

### Print Preview

It is a feature that allows viewing what a printed version of the document would look like on the screen before printing.

### Print Setup

Printer, page, size and direction.

### Open An Account

Open an account, the terminal will offer to open a demo account at the first program start. The first stage of account opening is selection of a server to connect to.

### Login to Trade Account

An existing account (whether a demo or a real one), authorization to get access to the trade account.

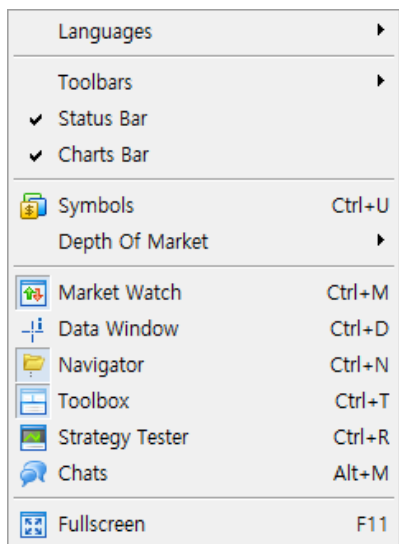
### Login to MQL5.community

Its open the settings of the trading platform to login to MQL5.community and get additional services.

### Exit

Program closure.

## View(v)



### Language

List of languages supported by MT5.

To apply newly selected language, restart the platform.

### Toolbars

To set up Tools, Chart, Analysis tools and the detail of the period.

User can also set up using 'tools' icon located under the main menu.

### Status Bar

Status bar can be found at the lower part of MT5.

With this bar, If the status bar is ticked, it means active status otherwise closed. Status bar shows account name, the time and date of mouse pointer, and price and the status of the server connection.

### Charts Bar

Located in the lower part of the chart. With this bar, User can set up/close, chart-name and move charts easily.

Main Menu

Tools

Toolbox

Market Watch

Navigator


### Symbols

User can see the specification, bars, ticks, description and expiration of each symbols. User also can execute shortcut <Ctrl+U>.


### Depth of Market

The depth of market is available for the symbols traded in the exchange execution mode, where trade operations are sent to an external trading system(exchange), as well as for non-exchange symbols.


### Market Watch

Opens/closes the currency pair window. Currency pair bar shows sell/buy prices. User also can execute the same function with  or <Ctrl+M> of the toolbar.


### Data Window

It opens/closes a data window. It shows date/time/prices mouse pointed. Data window shows date/time/prices mouse cursor pointed. User can execute the same function  or shortcut <Ctrl+D>.


### Navigator

It opens/closes the navigator window and shows holding account, indicators lists, and the target of the system trading strategy, users` index and script. User can execute the same function  or shortcut <Ctrl+N>.


### Toolbox

It opens/closes the Terminal window. Toolbox shows trade/Trade records/News/Alarm/Mailbox/System trading/trade daily records. User can execute the same function with Tools  or shortcut <Ctrl+T>.

### Strategy Tester

Testing and viewing of various reports, the expert parameters can be optimized in this window. User can execute the same function  or shortcut <Ctrl+R>.

### Chats

It connects with MQL5 community. User can execute the same function  or shortcut <Alt+M>.

### Full Screen

Changes / cancels overview mode. When open, window will show Main menu and Chart only. Shortcut <F11>.

Main Menu

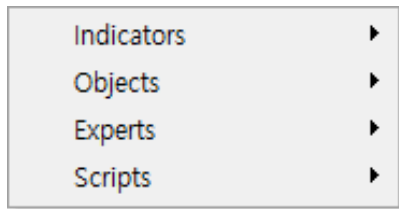
Tools

Toolbox

Market Watch

Navigator

## Insert(I)

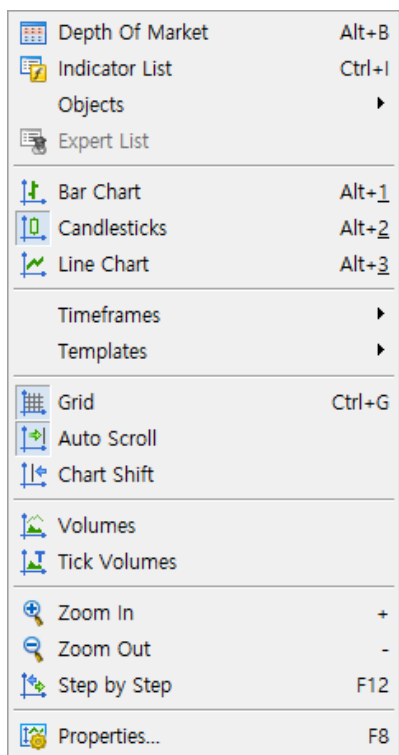
**Indicators**

Indicators can insert/delete with `indicator`. User can insert into the chart by double clicking at the explorer window.

**Objects**

These are the types of analysis tools group. They are Horizontal Line/Vertical Line/Trend line/Equidistant. It is located at analysis tools icon. User can apply a particular line to the chart.

## Charts(C)

**Depth Of Market**

It displays real volumes and prices of trade requests. User can execute the same function with shortcut <Alt+B>.


**Indicators List**

Edits/deletes indicators inserted on the MT5 chart. User can execute the same function with shortcut <Ctrl+I>.


**Objects**

Manages the trend line inserted on the chart.


**Bar Chart**

Switches the chart type to the Bar Chart. User can execute the same function  button or shortcut <Alt+1>.

**Candlesticks**

Switches the chart type to the Candlesticks. User can execute the same function with charts-Candle chart or  button at the chart tools or <Alt+2>.

**Line Chart**

Switches the chart type to the Line Chart. Alternate methods: Charts-Line charts tool group button  or shortcut <Alt+3>.

**Timeframes**

It sets period of the charts. User can select 1min, 5min, 15min, 30min, 1 hour, 4 hours, 1day, 1week and 1 month. Alternate methods: Icon >Click on `Tools` or Right click > chart -time frames.

**Templates**

Controls the Template for the active chart. User can apply the chart set up to another chart. Alternate method: Right click > Template.

Main Menu

Tools

Toolbox

Market Watch


Navigator

### Grid


Displays the Grid Lines on the active chart. Alternate methods: Right click > Refresh. Shortcut <Ctrl+G>.

### Auto Scroll


Enables Auto Scroll for the active charts. It refreshes the chart automatically.

User can execute the same function. 


### Chart Shift

For the active chart. Shift the chart from the left window border to the shift label of the chart - (a grey triangle in the upper part of the window). The label can be moved with the mouse horizontally within 10 to 50% of the window size. User can execute the same function. 


### Volumes

Its displays the Volume on the active chart. User can execute the same function. 


### Tick Volumes

It shows/hide tick volumes in the chart. User can execute the same function. 

### Zoom In

Zooms In on the active chart. Zooming in will allow more detailed view. Press <+> on the chart  tools group button or drag to right direction. Press <-> on the chart or perform chart tools button or drag to the left direction in the state of press left click at the lower parts of the chart.

### Zoom Out

Zooms Out on the active chart. Zooming out will allow broader view of the chart Press <-> on the chart or perform chart tools button  or drag to the left direction in the state of press left click at the lower parts of the chart.







### Step by Step

Shift the chart by one bar to the left or hit F12 to perform the same action.

### Properties

Chart window can be changed with this menu. User can change the background or color of the chart. Right click -properties or shortcut <F8>.

### Tool(T)

 New Order	F9
 Strategy Tester Agents Manager	F6
 MetaQuotes Language Editor	F4
 Global Variables	F3
 MetaQuotes Language Code Base	F2
 Options	Ctrl+O

#### New Order

Double click on a currency pair at the currency prices window or Right click -Trades-new order or tools group button. Shortcut <F9>.

#### Strategy Tester Agents Manager

Its open the MetaTester window manager of the strategy tester agents. Shortcut <F6>.



### MetaQuotes Language Editor

System trading strategy Expert Advisor, Executes `Meta editor for making new user indicator, Script and edit. Shortcut <F4>.

### Global Variables

Opens a new window for setting global variables for the window containing the list of global variables. Global variables are variables that are common of all Expert Advisors, custom indicators and scripts. Shortcut <F3>.

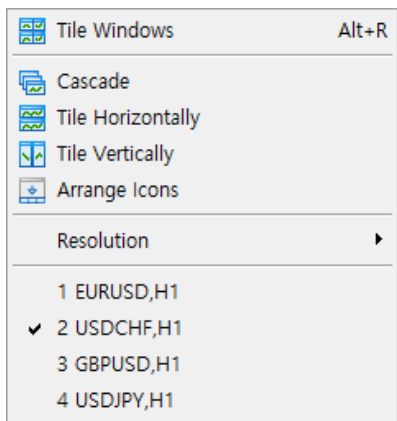
### MetaQuotes Language Code Base

Its open MQL5 code base published at MQL5.community for downloading. The base of source code is opened in Meta Editor at the "Code Base" tab of the "Toolbox" window. Shortcut <F2>.

### Options

Changes the user setting in MT5. User can change login and password and change the setting of chart, trend line and system trading. Shortcut <Ctrl+O>.

## Window(W)



### Tile Windows

It can arrange chart windows as a tile.

User can execute the same function with shortcut <Alt+R>.

### Cascade

Various charts arranged be terraced like stairs.

### Tile Horizontally

When there are a number of charts open, the charts can be arranged horizontally.

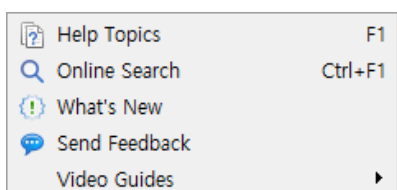
### Tile Vertically

When there are a number of charts open, the charts can be arranged vertically.

### Arrange Icons

It arranges icons on minimized chart window.

## Help(H)

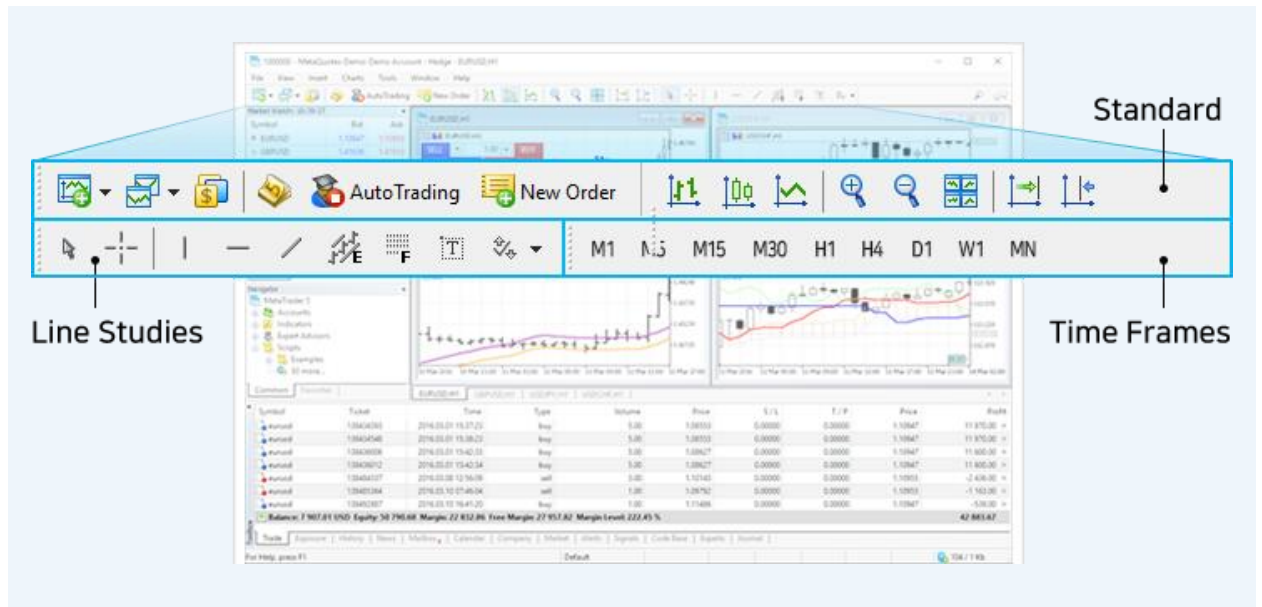


### Help Topics

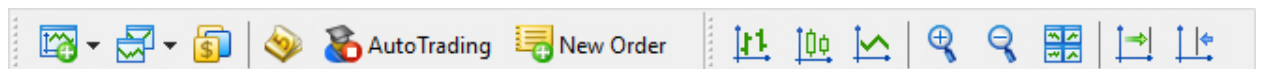
The Help menu contains general useful information about MT5. Shortcut: <F1>

The toolbar menu provided by MT appears as an image.

The standard tool, the Line Studies, and the Time Frames will be divided into three functions, the image section at the top is “the Standard tool”, and the bottom left is “the Line Studies”, at the bottom is “The Time Frames”



Standard



Open/Close New Page.

Users can see all currency pairs in MT5 and one on a pair, a graph will be opened. File menu-new Chart or Auto scroll-New Chart. Or Right click on a currency pair- New chart.



Store/Delete a Screen View.

User can save the kind of Chart and time es and this formation can be applied to other chart. Charts menu- Screen



List of Symbols.



MetaQuotes Language Editor.

Shortcut, < F4 >



Auto Trading.

Allow/or prohibit Auto Trading. Shortcut,< Ctrl+E >

Main Menu   Tools   Toolbox   Market Watch   Navigator**New Order.**

It opens new order window.

Double click on the currency prices window or right click on a chart. Shortcut &lt;F9&gt;.

**Shows Bar Chart.**

Charts- bar.

**Select Candle Chart**

If You Like See Candle Chart.

**Show Line Chart.****Enlarge Chart Size.**

Charts menu-Zoom out or right click-Zoom out or keyboard &lt;+&gt;.

**Reduce Chart Size.**

Charts menu-Zoom-in or right click-Zoom in or keyboard &lt;-&gt;.

**Arrange Window as Non Overlapping Tiles.**

Shortcut &lt;Alt+R&gt;

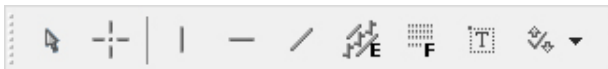
**Charts Auto Alignment.**

While on this icon press and current screen shows a chart, when new data come in, the charts will move to left side automatically to show new data.

**Setting Space on The Right Side of The Chart.**

Charts menu &gt; Chart move.

## Line Studies

**Select Cursor.**

If you select a cursor, window standard cursors can be used and you can use all functions and orders by moving mouse cursor.

**Select Cross.**

If you select a cross, you can see the prices of the cross position User can see date/time at the lower part of the vertical line.

**Insert Vertical Line On The Chart.****Insert Horizontal Line On The Chart.**

Main Menu Tools Toolbox Market Watch Navigator



[Show Line Chart.](#)

Horizontal/vertical diagonal line can be inserted and adjust slope.



[Draw Equidistant Channel.](#)

Equidistant Channel represents two parallel trendlines connecting extreme maximum and minimum close prices.



[Insert Fibonacci Retrenchment On The Chart.](#)



[Insert Text Line On The Chart.](#)



[It Shows All Insertable Symbols.](#)

You can insert thumb/arrow/stop/check.

### Time Frames



You can change chart periods by click `period button`. MT4 provides 9 chart periods.

They are M1(1min), M5(5min), M15(15min), M30(30min), H1(1hour), H4(4hours), D1(1day), W1(1week), MN(1month).

Main Menu   Tools   **Toolbox**   Market Watch   Navigator

Terminal enables to do

Trades/Exposure/History/News/Mailbox/Calendar/Company/Market/Alerts/Signals/Code Base/Experts/Journal at a page. It can be opened with a View-Terminal or shortcut < Ctrl+T >

**Terminal**

Symbol	Ticket	Time	Type	Volume	Price	S / L	T / P	Price	Swap	Profit
Balance: 10 000.00 USD   Equity: 10 000.00   Free Margin: 10 000.00										0.00

For terminal bottom tab information, click on the menu below.

Trade | Exposure | History | News | Mailbox | Calendar | Company | Market | Alerts | Signals | Code Base | Experts | Journal

## Trade

Trades tab shows the statement of Buy Limit/Buy Stop/Sell Limit/Sell Stop. You can modify stop loss/Limit or close contract and position. If you click right button, the below window will appear. Wherever you are, you can go to this window by shortcut < Ctrl+F9 >

- New Order F9
- Close Position
- Modify or Delete
- Trailing Stop ▶
- Volumes ▶
- Profit ▶
- Report ▶
- Show on Charts ▶
- Register as Signal
- Show Milliseconds
- Auto Arrange A
- Grid G
- Columns ▶

### New Order

Execute new order window. Tools menu>New order or short-cut < F9 >

### Close Position

You can close a selected contract or position in close order. The same function can be executed by double click in order tab.

### Modify or Delete

This tab can modify and cancel stop loss/take profit. The same function can be executed by double clicking on the hold contract or position.

### Trailing Stop

Trailing stop is an order to buy/sell a security if it moves in an unfavorable direction. Trailing stops automatically adjust to the current market price of a market instrument, providing the investor with greater flexibility to profit, or limit a loss. You can setup, change or delete at the Trade-choose holding order-Mouse right button-Trailing stop.

**Volumes**

Selecting units, in which volumes will be shown (lots or amounts);

**Profit**

Selecting units, in which profit will be shown (money or points);

**Report**

Open the submenu of generating report in the Open XML (MS Office Excel 2007) or HTML (Internet Explorer) format. The report contains the information about current open positions and pending orders as well as the exposure details;

**Auto Arrange**

Row and line size can be arranged automatically.

**Grid**

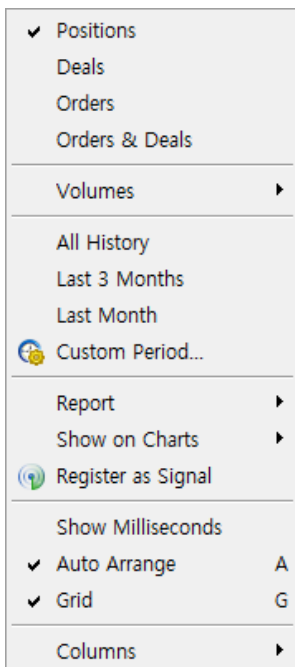
It shows or hides grid lines in the "Market Watch" window; it shows/hides scale mark for column division.

**Columns**

Open the submenu for enabling/disabling the columns of Commission, Swap, Profit and Comment;

**History**

'The History' tab shows, trade statements for the selected period. Trades records - Right Click then, you can see as pictured below.

**Deals**

After the execution of this command, only executed deals are shown in the "History" tab";

**Orders**

After the execution of this command, only orders are shown in the "History";

**Orders & Deals**

After the execution of this command, both deals and orders are shown in the "History" tab;

**Volumes**

Selecting units, in which volumes will be shown (lots or amounts);

**All History**

Show the entire account history;

**Last 3 months**

Show only the last 3 months' history;

Main Menu   Tools   **Toolbox**   Market Watch   Navigator

### Last Month

Show only the last month history;

### Custom Period

Call the window for setting up a custom period for displaying the trading history;

### Report

Open the submenu of generating report on the trading history of account in the Open XML (MS Office Excel 2007) or HTML (Internet Explorer) format.

### Auto Arrange

Enable/disable automatic arrangement of column sizes;

### Grid

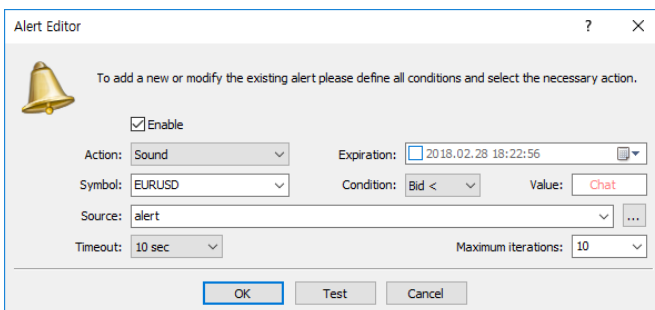
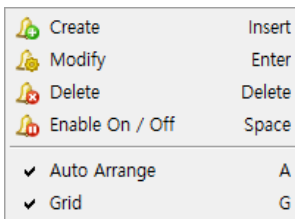
Show/hide grid for separating fields;

### Columns

This entry appears only if the deals are chosen to be shown in history. Using it one can open a submenu of showing/hiding the "Commission", "Swap" and "Comment" columns;

## Alerts

'Alerts' tab notifies to the user at predefined conditions. You can see below the window when you right click on alarm icon.



### Create

It sets up new alerts. You can set alerts a bit lower or higher prices to bid and ask order level, which will be activated once the pending order reached. You can execute the same function with key in the status of the alarm tab selection.

### Modify

You can modify alerts setting with this bar. You can execute the same function with < Enter > key in the status of the alarm tab selection.

**Delete**

It deletes selected 'alerts'. You can execute the same function with < delete >key in the status of the alarm tab selection.

**Enable On / Off**

Executes /deletes selected alarms. < Space > key at the state of selected alarm.

**Auto Arrange**

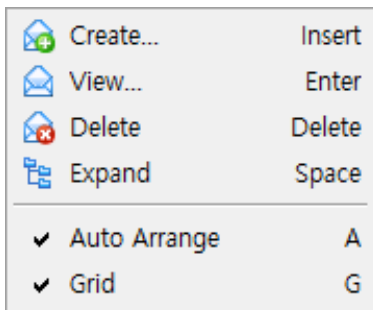
Automatically fits low and line in proportion to the screen size.

**Grid**

It shows or hide grid lines.

**Mailbox**

You can see mail or message from the system manager at the mailbox. Right click on 'mailbox' tab then you can see menu window as below.



**View** Shows selected mail.

**Delete** Deletes selected mail.

**Auto Arrange**

It fits low and line in proportion to the screen size automatically.

**Grid**

It shows grid or hide grid lines in the "Market Watch" window.

**Market**

The Market tab connects a user of the client terminal with MQL5 programs store at MQL5.community. Here you can purchase any program or download a free application.

**Top Experts**











**Top Indicators**





### Signals

The “Signals” tab can look it up EA(Expert Advisor) list in the world. This menu provides a direct view of the transaction performance, risks, and profit margins. Also It is linked to request automatic sales and development orders.

Signal / Equity	Growth / Weeks	Subscribers	Trades / Win	Max DD / PF	
 <a href="#">Hessam1</a> 372.09 EUR	-81.40% / 10	0	230 / 69%	94% / 0.76	FREE ☆
 <a href="#">Hosseinsharif</a> 1 594 USD	52.20% / 7	0	118 / 63%	22% / 1.72	FREE ☆
 <a href="#">Cou12</a> 4 163 USD	38.78% / 7	9	42 / 67%	13% / 2.65	FREE ☆
 <a href="#">Dx53220772</a> 33 573 USD	38.97% / 5	0	40 / 65%	16% / 2.03	FREE ☆
 <a href="#">DNK MT5 Demo 2</a> 9 922 USD	52.61% / 6	11	142 / 90%	44% / 2.06	FREE ☆
 <a href="#">Oscar Factor</a> 1 394 USD	39.71% / 11	46	157 / 70%	23% / 1.33	FREE ☆
 <a href="#">PA Algo</a> 12 528 GBP	25.28% / 5	0	143 / 76%	3% / 3.72	FREE ☆
 <a href="#">AlgoTrader2</a> 1 263 USD	26.30% / 22	5	49 / 59%	13% / 1.78	FREE ☆

### Code Base

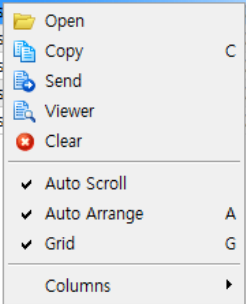
The “Code Base” tab“ is where users can increase their understanding of transactions or the market. These articles are posted on MQL5.com and users can rate those postings themselves to sort out the great content.

Name	Description	Rating	Date
<input checked="" type="checkbox"/> DSL - TEMA MACD	Variation of a long known and useful	☆☆☆☆☆	2018.02.15
<input checked="" type="checkbox"/> DSL - DEMA MACD	Variation of a long known and useful	☆☆☆☆☆	2018.02.15
<input checked="" type="checkbox"/> Stochastic RVI	Stochastic and RVI (Relative Vigor Ind	☆☆☆☆☆	2018.02.15
<input checked="" type="checkbox"/> Get M1 OHLC data for MetaTrader 4 backtesting	Usually most brokers do not provide M	☆☆☆☆☆	2018.02.14
<input checked="" type="checkbox"/> Inverse Fisher RVI	The Inverse Fisher Transform normaliz	☆☆☆☆☆	2018.02.14
<input checked="" type="checkbox"/> Fisher RVI	This indicator has an addition of Fisher	☆☆☆☆☆	2018.02.14
<input checked="" type="checkbox"/> Stochastic Extended	This version of Stochastic Oscillator all	☆☆☆☆☆	2018.02.12
<input checked="" type="checkbox"/> T3 Stochastic Momentum Index	This version is doing the calculation in	☆☆☆☆☆	2018.02.12
<input checked="" type="checkbox"/> Stochastic Momentum Index	The Stochastic Momentum Index (SM	☆☆☆☆☆	2018.02.12
<input checked="" type="checkbox"/> Directional Efficiency Ratio	The Efficiency Ratio (ER) was first pres	☆☆☆☆☆	2018.02.12
<input checked="" type="checkbox"/> TTM trend	The TTM (Trade The Markets) Trend is	☆☆☆☆☆	2018.02.12
<input checked="" type="checkbox"/> MACD TEMA	MACD TEMA is even a bit more “faster	☆☆☆☆☆	2018.02.09
<input checked="" type="checkbox"/> MACD DEMA	MACD that is using DEMA fo calculat	☆☆☆☆☆	2018.02.09
<input checked="" type="checkbox"/> Smoothed Kijun-Sen	The Kijun-Sen is a major indicator line	☆☆☆☆☆	2018.02.08
<input checked="" type="checkbox"/> CCI alternative	Commodity Channel Index (CCI) is a v	☆☆☆☆☆	2018.02.08
<input checked="" type="checkbox"/> Volume Rate of Change	The Volume Rate of Change indicator	☆☆☆☆☆	2018.02.06
<input checked="" type="checkbox"/> DevStops	A variation of Deviation Stops (DevSto	☆☆☆☆☆	2018.02.06

## Journal

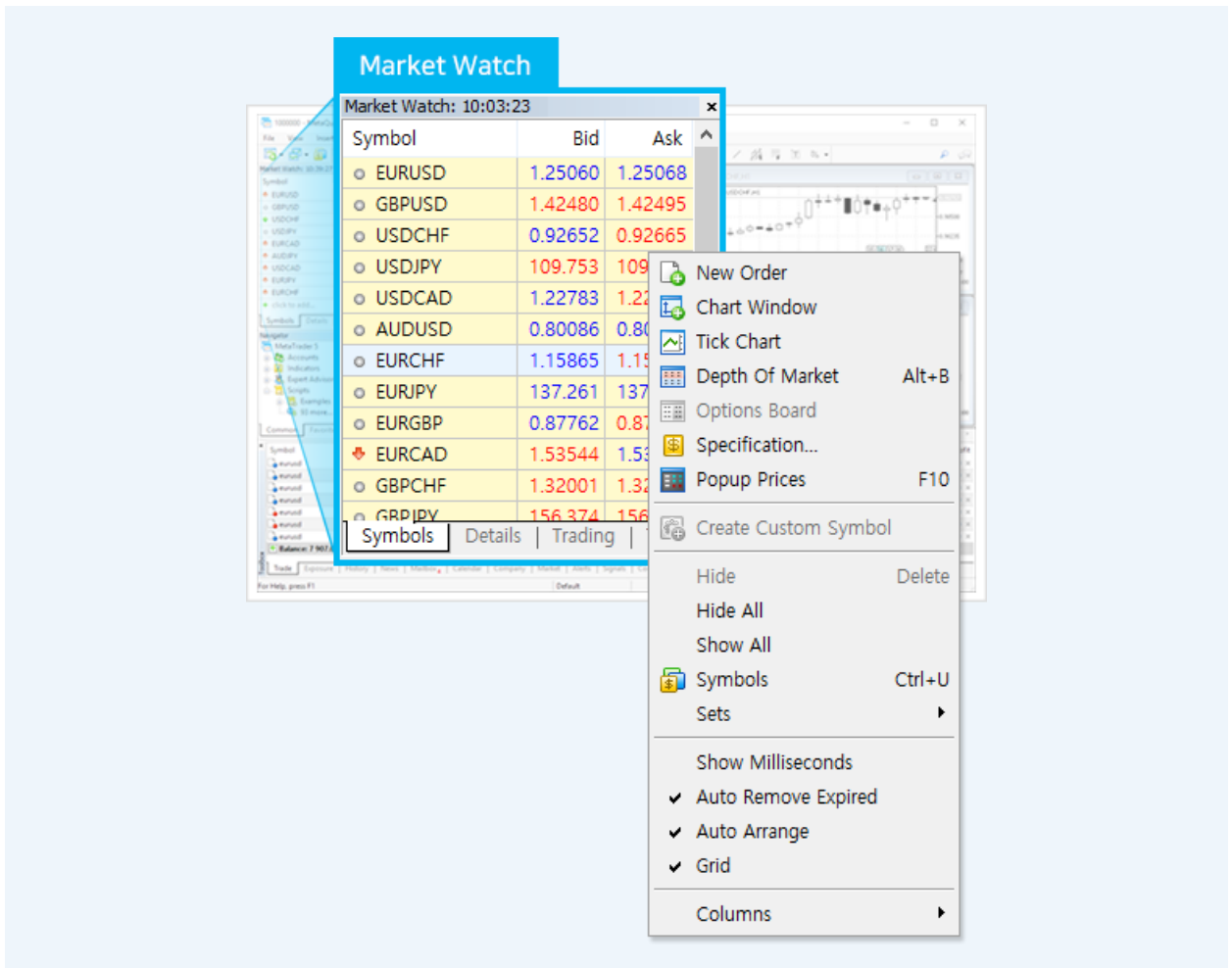
The “Journal” tab records all transactions you have made in the past and all information that is traded on MT5. The Journal tab defaults to a one-day transaction history, so you must right-click the previous transaction log to select the appropriate date file, as shown below.

Time	Source	Message
2018.02.20 10:46:35.6...	Terminal	C:\Users\...Quotes#Terminal#D0E820...
2018.02.20 10:46:35.6...	Terminal	C:\Users\...Quotes#Terminal#D0E820...
2018.02.20 10:46:35.6...	Terminal	C:\Users\...Quotes#Terminal#D0E820...
2018.02.20 10:46:35.6...	Terminal	C:\Users\...Quotes#Terminal#D0E820...



- Open
- Copy
- Send
- Viewer
- Clear
- ✓ Auto Scroll
- ✓ Auto Arrange
- ✓ Grid
- Columns

The “Market Watch” provides market information on more than 50 pairs of currency pair provided by the MT5. The “Market Watch” can be opened and closed using the ' View Menu – Market Watch', shortcut, or the buttons on the main toolbar. The “Bid” shows the exchange rates that apply to closing sell orders and buy orders, and the “Ask” indicates the rates applied to closing buy orders and sell orders. Right click on the screen and a screen will appear as shown in the following picture.



### New Order

Open the window to create a new order in the selected symbol. The same window can be opened by pressing the F9 key.

### Chart Window

Open the chart window of the selected symbol.

### Tick Chart

Switch to the "Ticks" tab of the selected symbol. The tick chart can also be opened by pressing the "Space" or "Tab" key.

Main Menu   Tools   Toolbox   Market Watch   Navigator

#### Depth of Market

Open the "Depth of Market" window of a selected symbol.

#### Specification

Open the window of symbol specification.

#### Popup Prices

Open the window of the same name.

#### Hide

Delete (hide) the symbol from the list. To minimize the traffic, it is recommended to hide unused securities from the quote window by this command or by pressing on the Delete button.

#### Hide All

Hide all symbols displayed in the "Market Watch" window.

#### Show All

Show all securities available on the trade server.

#### Symbols

Call the window where all available symbols can be managed.

#### Sets

Open the menu for working with symbol sets.

#### Auto Arrange

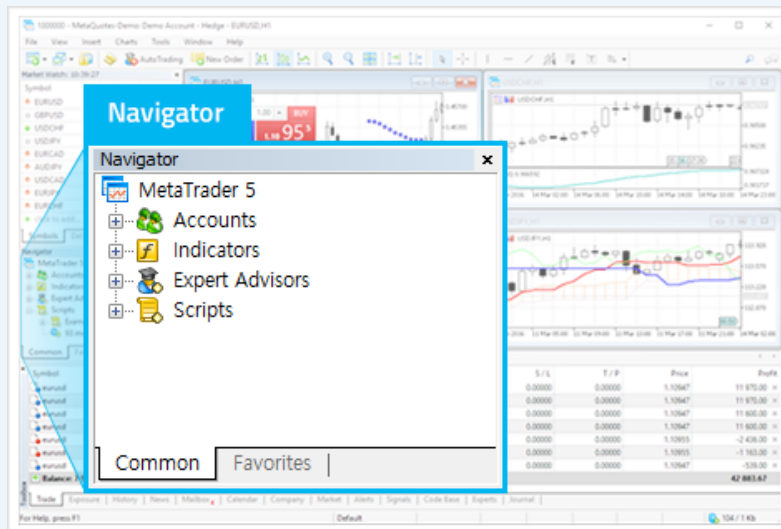
If this option is enabled, the size of columns will be set automatically.

#### Grid

Show/hide grid to separate the table fields.

#### Columns

A menu for the selection of columns displayed in the "Symbols" tab.



### Accounts

Show your accounts.

### Indicators

Show the primary indicators provided in the MT5. Insert by double-clicking on the indicators you would like to use, 'Click right button of mouse – Attach to chart' or drag and drop the indicators onto the chart.

### Expert Advisors

The available system trading strategies are shown. You can select a strategy to run by drag and drop it into the chart of your choice. The properties window is launched that sets the variables of the system trading strategy at the same time that you insert it into the chart. The button on the main toolbar " Expert Advisors " must be pressed before the strategy can be tested and executed.

### Scripts

You can set any indicators to the user indicators. The Meta Quotes Language Editor allows you to modify or create new indicators, and to download and use new ones.

## 2. TRANSACTION

Terminology

How to Order

Market Orders

### New Order

New Order (Contract, Position) is the execution of the order and allows the entry of a Buy or Sell position. Entry occurs when a market order or limit order executed.

### Close Order

It is the execution of the opposite position order in the order you have (contract, position), and is the end of the contract. Close order occurs when you run Stop-loss/Take-Profit for an order you have (contract, position) or a Close order execution.

### Stop Loss

Stop-loss is designed to limit an investor's loss on a security position. It is an order placed to buy/sell once the stock reaches a certain price.

### Take Profit

Triggers a limit order buy/sell when the market price reaches the profit price.

### Trailing stop

Trailing stop is an order to buy/sell a security if it moves in an unfavorable direction. Trailing stops automatically adjust to the current market price of a stock, providing the investor with greater flexibility to profit, or limit a loss.

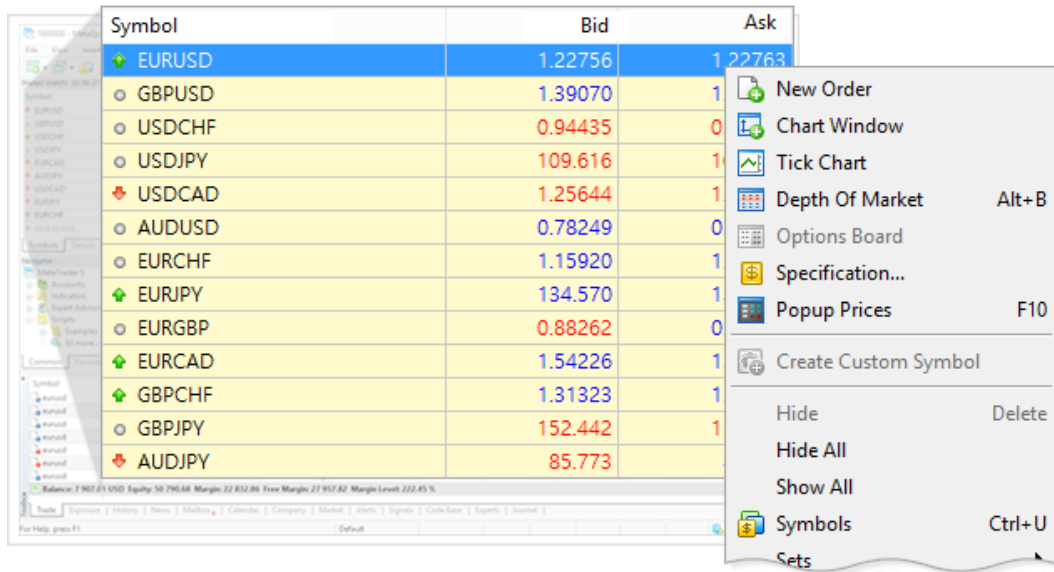
Terminology

How to Order

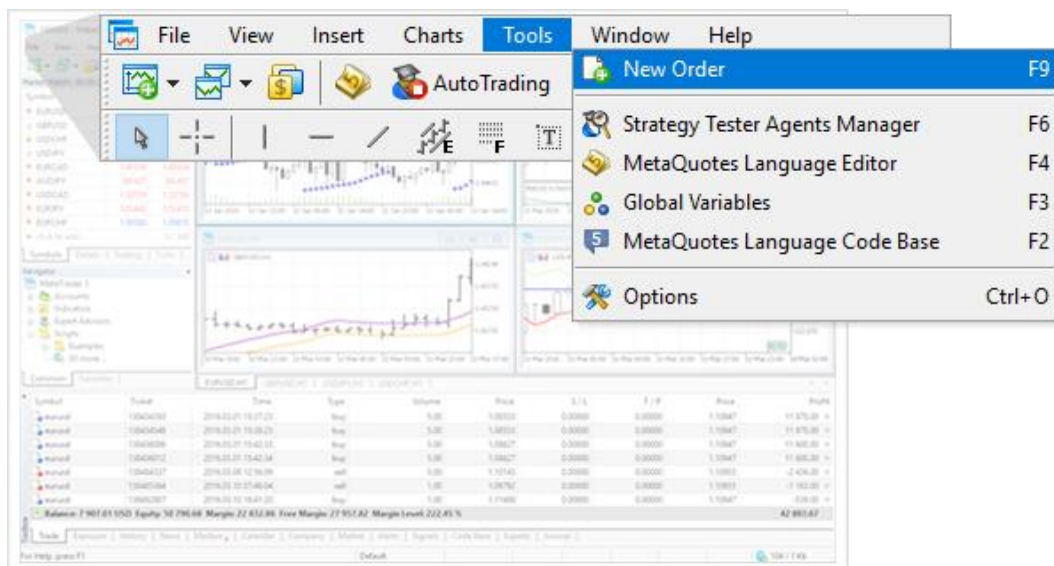
Market Orders

01. There are various ways to make an order in MT5.

Double click the currency pair you want at the currency prices window, or Mouse right button - Click `New order` or Mouse right button - Click `New order` on the ticked chart at the currency prices window.

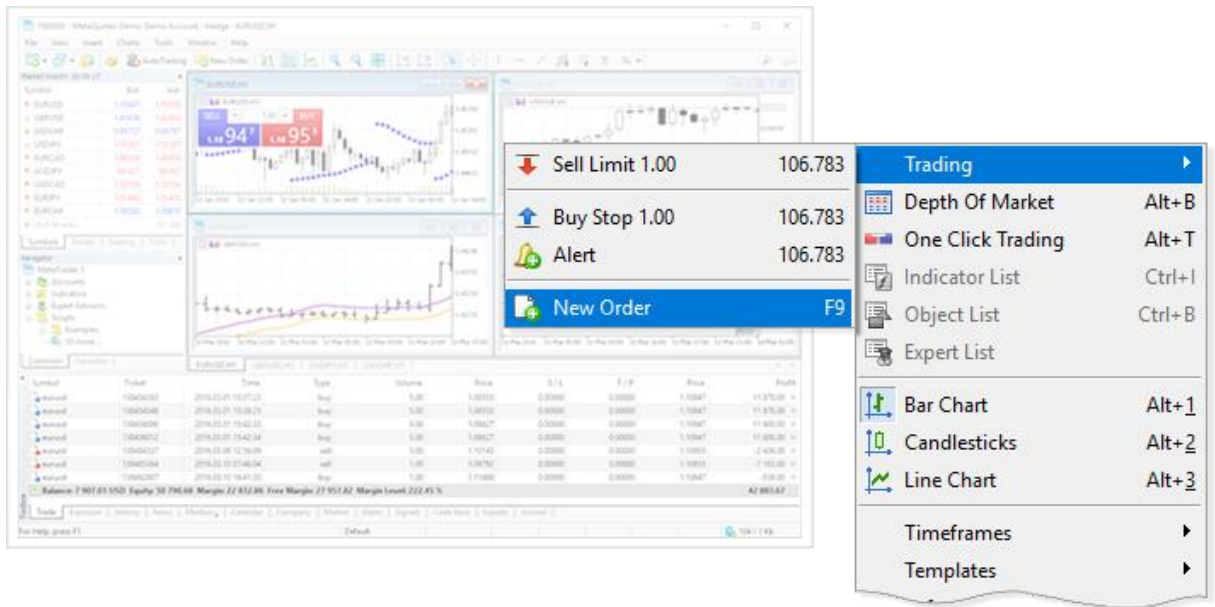


02. Mouse right button -Click `New order` on the ticked chart at the currency prices window.

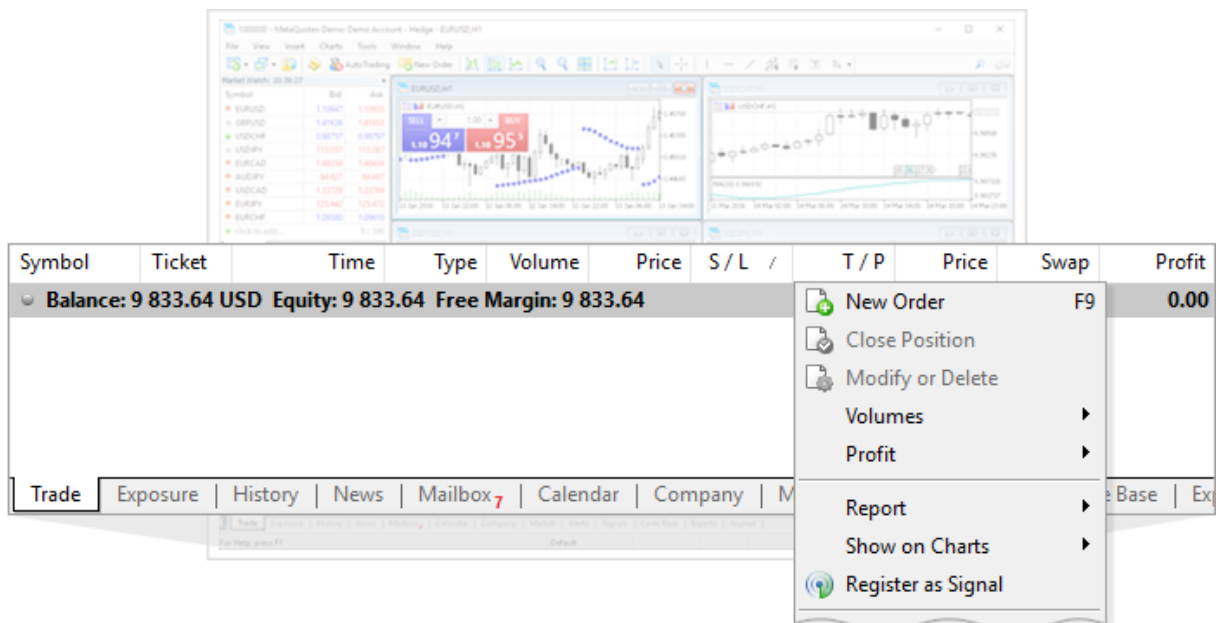




03. Click `New order` at the right mouse button on the chart



04. Mouse right button > Click `New order` at the Toolbox window `trade` tab.



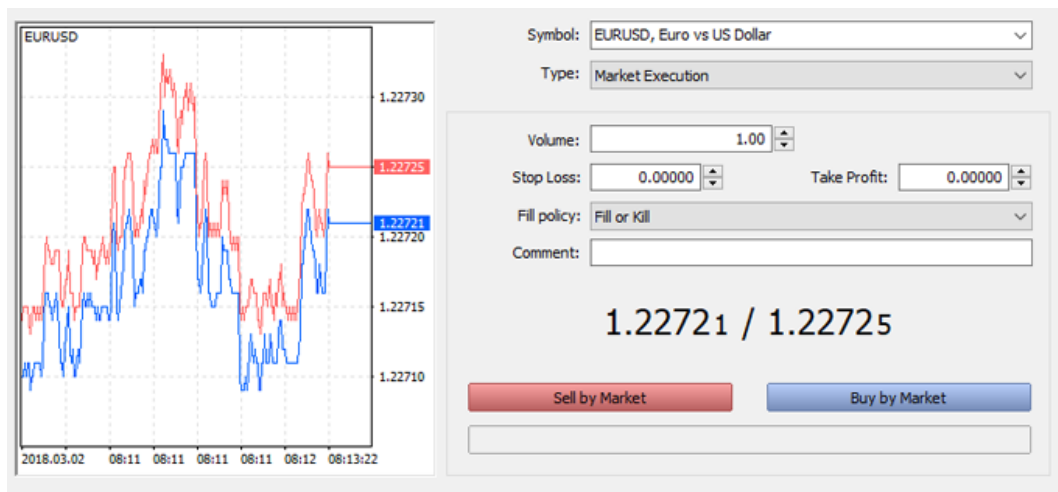
05. Use shortcut < F9 >

[Terminology](#)[How to Order](#)[Market Orders](#)

The orders MT5 provided are as below.

Market Price Order

It executes order at market price instantly. Click buy or sell button for trades.



Select currency pair, volume and click buy or sell button. If market prices move more than deviation rapidly, trade may not complete. When you select 'Close to maximum deviation from the market price at the bottom of the order window and runs the order by specifying the deviation, the order can be placed within the specified deviation range even if the exchange rate moves temporarily and sharply.

### Currency

Select the type of coin you want to trade. Select tradable coin provided by Wisebitcoin.

### Volume(Lot)

Specify volume(lot). Contactable figures start with 0.01.

### Stop Loss

Specify Stop Loss price. If you set the desired price for the stop loss in advance, it will automatically be stop loss when the price reaches the corresponding spread.

### Take Profit

Specify Take Profit price. If you set the desired price for the take profit in advance, it will automatically be take profits when the price reaches the corresponding spread.

### Remarks

Users can enter notes onto position after trade, user can see the remarks at trade tab.

### Orders

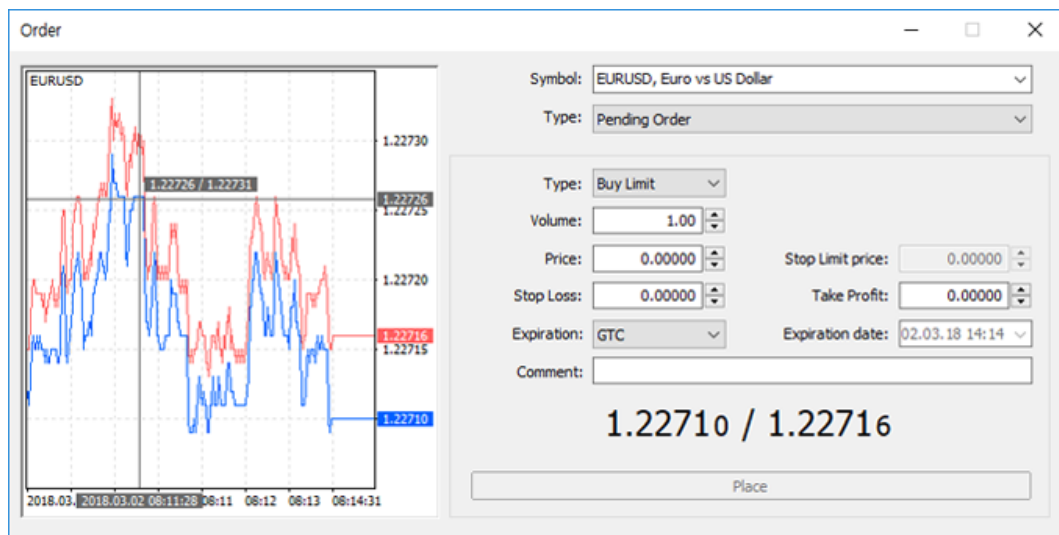
You can choose between a market order and a limit order, and the market price order is set by default. You have to make a separate choice when you want limit order.

### Buy/Sell

Executes buy or sell order. Please recognize buy - Red button and sell - Blue button.

### Limit Order

Selecting a limit order from the 'Type' in the main order window will change the main window as shown below and allow limit order. A limit order is an order that binds the sale at a price you specify or that is superior for that price. Although it is advantageous that the contract will not be made less unfavorable than the price specified, the sale may not be successful if there is no relative order for the price specified.



The price at which you want the order to be executed. Expiration date: The order is a valid deadline, it can be specified in days, and the time is automatically set to the time when the expiration date is entered.

When a limit order executed, you can see the status at the trade tab in toolbox window. You can see at the chart limit order prices at view trades` at `tools- option-chart tab`. The limit order is closed when the specified price is reached, after that `Trade` tab on the Toolbox screen of outstanding limit order price disappear, then the new position appears in history.

### The kind of orders

There are 4 kinds of orders and those are Buy Stop, Buy Limit, Sell Stop, and Sell.

- Buy-Stop expects the current upward trend to continue, so it is used to place a purchase order at a price higher than the current price. Orders will be placed if the market price is the same as specified

- Buy limit is the input of a purchase order at a price lower than the current price in the hope that the current downward trend will shift upward. Orders will be placed if the market price is the same as specified.

- Sell stop expects the current downward trend to continue, so it enters a selling price order at a price lower than the current price. Orders will be placed if the market price is the same as specified.

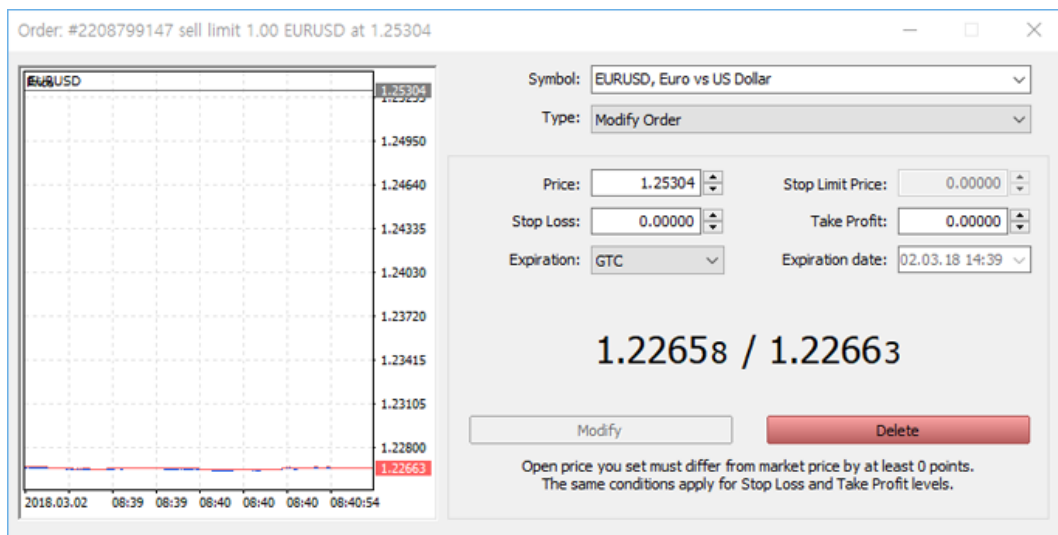
- Sell Limit is the input of a selling price order at a price higher than the current price in the hope that the current upward trend will shift downward. Orders will be placed if the market price is the same as specified.

Selecting a limit order from the 'Type' in the main order window will change the main window as shown below and allow limit order. A limit order is an order that binds the sale at a price you specify or that is superior for that price. Although it is advantageous that the contract will not be made less unfavorable than the price specified, the sale may not be successful if there is no relative order for the price specified.

The price at which you want the order to be executed. Expired date: The order is a valid deadline, it can be specified in days, and the time is automatically set to the time when the expiration date is entered.

When a limit order executed, you can see the status at the trade tab in toolbox window. You can see at the chart limit order prices at view trades` at `tools- option-chart tab`. The limit order is closed when the specified price is reached, after that `Trade` tab on the Toolbox screen of outstanding limit order price disappear, then the new position appears in history.

Limit order can be deleted or modified by double clicking `Modify and Delete Order` on the designated order or the selected order.



### Stop Loss

When the current market is moving in the opposite direction to hold the order (contract, position), it is an order to automatically close, holding contracts at a fixed price at the expense of the current loss to reduce the losses. The buy contract is closed, according to the selling price and the sell contract is settled according to the buy price.

Symbol	Ticket	Price	S / L /	T / P	Price	Swap	Profit
eurusd	2143767...	1.22802	0.00000	0.00000	1.22720	0.00	82.00 ×
Balance: 9 637.36 USD Equity		8 491.34	Margin Level: 791.47 %				82.00

Trade | Exposure | History | News | Market | Alerts | Signals | Code Base | Experts | Journal |

## Take Profit

When the market price moves in the same direction as the orders they hold (contract, position) but the flow is unclear, it is an order to automatically close holding contracts that take a certain amount of profit. The buy contract is close, according to the selling price and the sell contract is closed according to the buy price. Stop loss and Take profit is available from both a new order and an already contracted market price order or limit order.

When you place new orders, you can enter the price of stop loss/take profit. For orders already closed or unsecured limit order, double-click the “stop loss/take profit” – bottom part(bottom red box) on the ‘Trade’ tab in the Toolbox screen, orders modified by clicking modify button after entering the price of “stop loss/take profit”.

Symbol	Ticket	Price	S / L /	T / P	Price	Swap	Profit
eurusd	2143767...	1.22802	0.00000	0.00000	1.22720	0.00	82.00 ×
Balance: 9 637.36 USD Equity		8 491.34	Margin Level: 791.47 %				82.00

Trade | Exposure | History | News | Market | Alerts | Signals | Code Base | Experts | Journal

As the market price approaches the entered price of stop loss/take profit, stop loss becomes red and take profit becomes green. If you cancel the entered orders of stop loss/take profit, pop-up the order modifies window by using the same method, and select stop loss/take profit price, and press the key to enter the price as ‘0’, and press the modify-order button, then stop loss/take profit order will be canceled.

## Close Order

Users may close their order(contract, position) as market prices at any point in time. From the ‘Trade’ tab on the Toolbox screen, you can select the holding order that you wish to close and call up the closing window by ‘Right-clicking – Close position’ or double-clicking on it. If the close screen appears as shown below, you can enter the contract(volume) count and execute a closing order by clicking the close order button (yellow) at the bottom of the screen (Divided closing is available). In principle, the closing is composed of market prices; orders may not be contracted when the market changes rapidly.



## Trailing Stop

The trailing stop is a function that preserves a certain level of profit by increasing the level of the stop loss when the order you have placed is profitable. Once the holding order (contract, position) has been selected, it can set or change, trailing stop using 'click right mouse button – trailing stop'. The width of the trailing stop can be set to any point as shown in the picture below, and users can also specify it themselves.

Symbol	Ticket	Volume	Price	S / L /	T / P	Price	Swap	Profit
eurusd	2143969...	1.00	1.22699	0.00000	0.00000	1.22700	0.00	-1.00 x
Balance: 9 799.97 USD    Equity Margin: 8 571.98    Margin								

Trade	Exposure	History	Company	Market	Alerts
-------	----------	---------	---------	--------	--------

- New Order
- Close Position
- Modify or Delete
- Trailing Stop
- Volumes
- Profit
- Report
- Show on Charts
- Register as Signal
- Show Milliseconds
- ✓ Auto Arrange
- ✓ Grid

- Delete All
- None
- 0 points
- 5 points
- 10 points
- 15 points
- 20 points
- 25 points
- 30 points
- 35 points
- 40 points
- 45 points
- Custom...

### 3. CHART

Chart Property

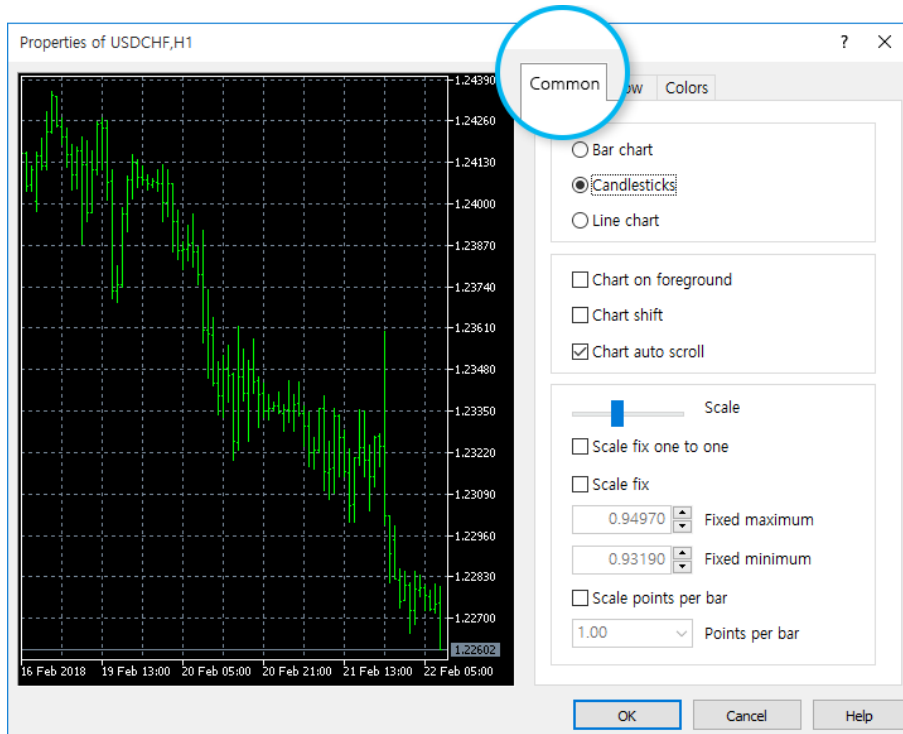
Chart Basic Setting

Indicators

Appearance and properties of each chart in the terminal can be set up individually. To do this one should execute the "Properties" command of the "Charts" menu, the chart context menu command of the same name or press the F8 key. As a result of all these actions the "Properties" window containing three tabs will appear: "Common", "Show" and "Colors".

### Common

In this tab the common properties of a chart can be set up by users.



### Bar Chart

Show charts as a sequence of bars.

### Candlesticks

Show chart as a sequence of candlesticks.

### Line chart

Show chart as a broken line that joins bar close prices.

### Chart on Foreground

Place the chart on the "foreground". If this option is enabled, all analytical objects will be placed "under" the price chart.

### Chart Shift

Shift the chart from the right border of the window to the shift mark.



### Chart Auto Scroll

Allow/forbid to shift the chart to the left automatically after the new bar has started to form. If this option is enabled, the latest bar will always be shown in the chart.

### Scale

Scaler is used for managing the chart scale.

### Scale Fix One to One

Fix the chart scale as "one to one" (the size of one pip of the vertical axis in pixels is equal to the distance between the bars axes in pixels). At that, the "Scale fix" option will be enabled automatically, and a scroll bar will appear at the right side of the window that allows to move the chart vertically. This mode is necessary for precise constructions.

### Scale Fix

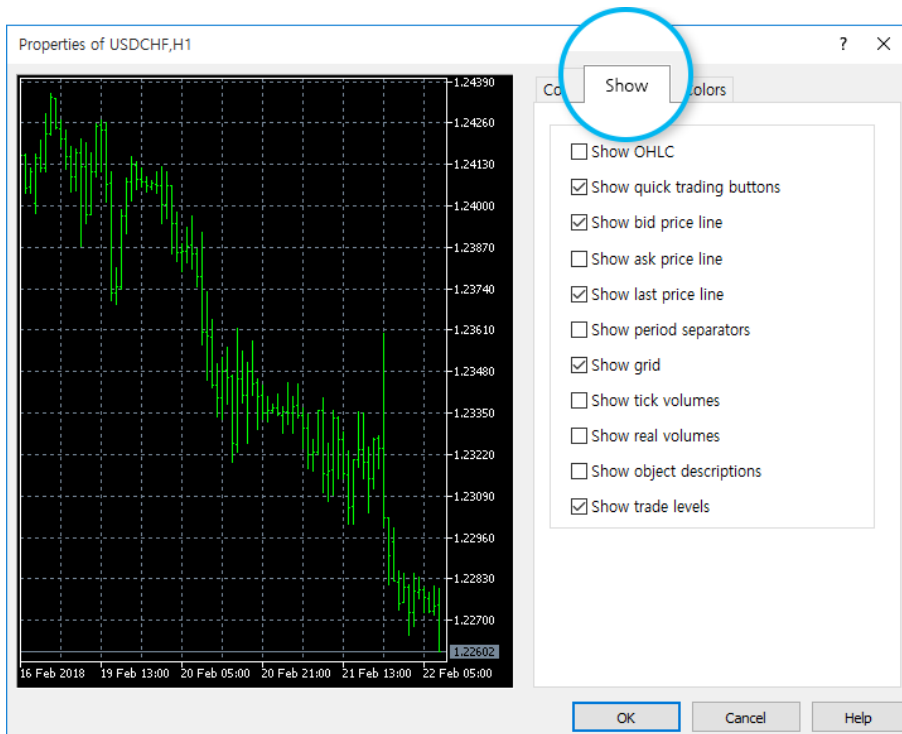
Fix the current chart scale along the vertical axis.

### Scale Points per Bar

Fix the chart scale by the ratio of points on the vertical scale to one bar. The "points per bar" field to specify the number of bars becomes active.

### Show

In this tab the common properties of a chart can be set up by users.



**Chart Property**

## Chart Basic Setting

## Indicators

**Show OHLS**

Show/hide OHLC line. If this action is done, an additional data line will appear in the upper left part of the window. Except for symbol name and chart period, the latest bar prices are listed in it. Price are recorded in the following format: OPEN, HIGH, LOW and CLOSE (OHLC) — bar open price, the highest bar price, the lowest bar price, and bar close price, respectively.

**Show Bid Price Line**

Show/hide the Bid price level of the latest quote. After the command has been executed, a horizontal line corresponding to the Bid price of the latest quote appears in the chart.

**Show Ask Price Line**

Show/hide Ask price level of the latest quote. Bars are drawn and shown only on Bid prices in the terminal.

**Show Last Price Line**

Show/hide the level of the price, at which the latest traded was executed. This line can be shown for stock symbols only.

**Show Period Separators**

Show/hide period separators. Date and time of each bar are displayed on the horizontal axis of the chart.

**Chart Auto Scroll**

Allow/forbid to shift the chart to the left automatically after the new bar has started to form. If this option is enabled, the latest bar will always be shown in the chart.

**Show Grid**

Show/hide grid in the chart window.

**Show Tick Volumes**

Show/hide volume chart in the lower part of the window calculated by the number of ticks. The option is unavailable in case of fixed scale.

**Show Real Volumes**

Show/hide volume chart calculated by the real number of executed trades. This option is available for stock symbols only.

**Show Object Description**

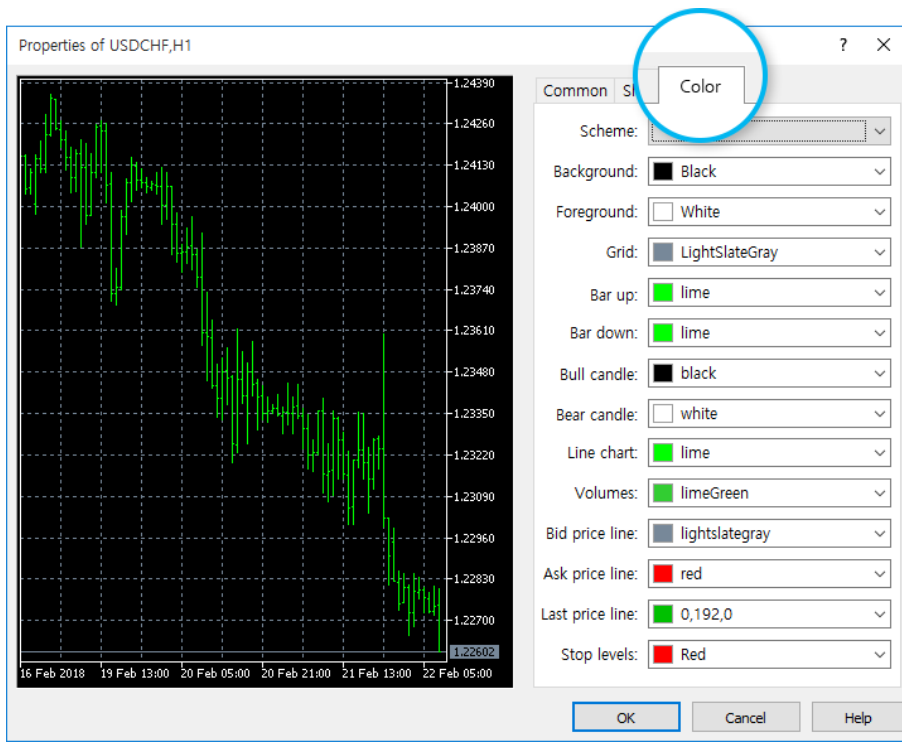
Show/hide object descriptions in the chart. If this option is enabled and there are descriptions of objects imposed into the chart available, they will be shown directly on the chart.

**Show Trade Levels**

Enable/disable the displaying of price levels at which a position has been opened or a pending order has been placed, as well as Stop Loss and Take Profit levels are shown in the chart. This option works only if the same option is enabled in the terminal settings.

**Colors**

The colors tab enables you to select chart colors. The default 'Chart Style' can set it to "Yellow on Black", "Green on Black", "Black on White", and also different color of User's choice.



### Scheme

Selects a predefined color scheme.

### Background

Chart background color.

### Foreground

Color of axes, scales, OHLC line.

### Grid

Chart grid color.

### Bar Up

Color of bar up, shades and fringing of the Bull Candle body.

### Bar Down

Color of bar down, shades and fringing of the Bear Candle body.

### Bull Candle

Color of the Bull Candle body.

### Bear Candle

Color of the Bear Candle body.

### Line Chart

Color of line chart.

Chart Property

---

Chart Basic Setting

Indicators

#### Volumes

Color of volumes and levels of open positions.

#### Bid Price Line

Color of Bid price line.

#### Ask Price Line

Color of the Ask price line.

#### Last Price Line

Line color of the latest executed trade price.

#### Stop Levels

Color of stop order levels (Stop Loss and Take Profit).

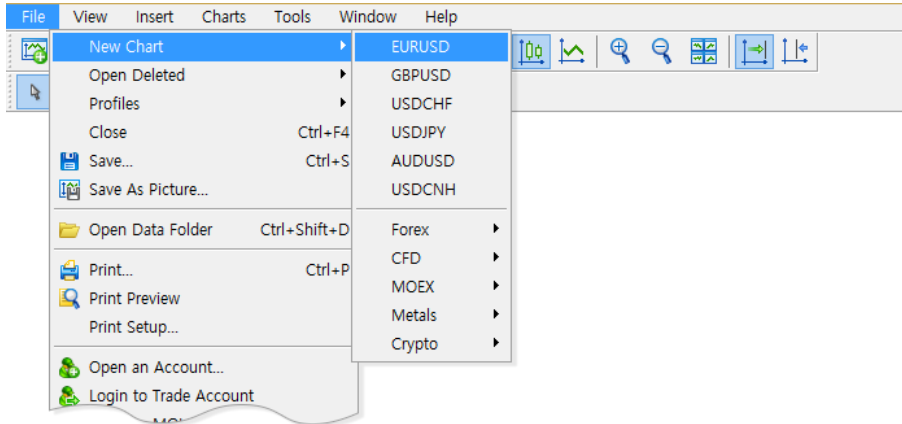
Chart Property

Chart Basic Setting

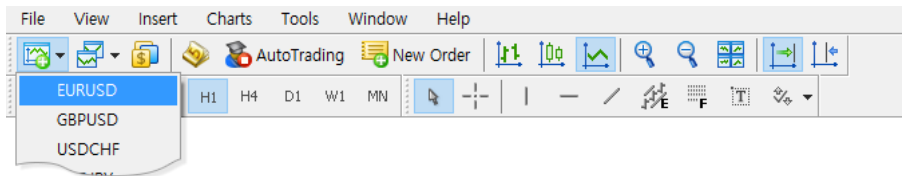
Indicators

## Chart Opening

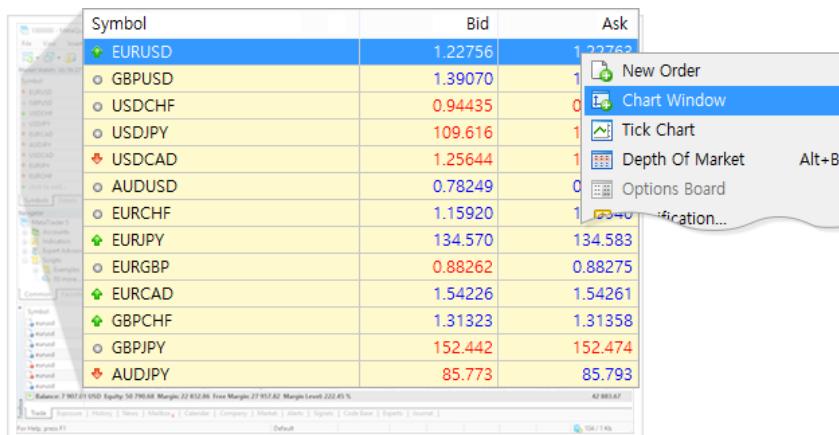
## 01. "File – New Chart"



## 02. By pressing on the button of the "standard" toolbar.





## 03. By pressing on the button of the "standard" toolbar. New charts can also be opened from "Market Watch" window by dragging the list element (symbol) from the window to any place of the terminal working area or by executing the "Chart Window" command of the context menu.



## Chart Setup

## 01. Chart Size Setting

You can adjust the size and number of candles shown on the chart using the buttons   on the chart toolbar, or using the < - > on the right side of the keyboard. In addition, you can zoom in and out for chart size when you are left-clicking and left-to-right from the bar which date and time appear at the bottom of the chart.

## 02. Use Templates

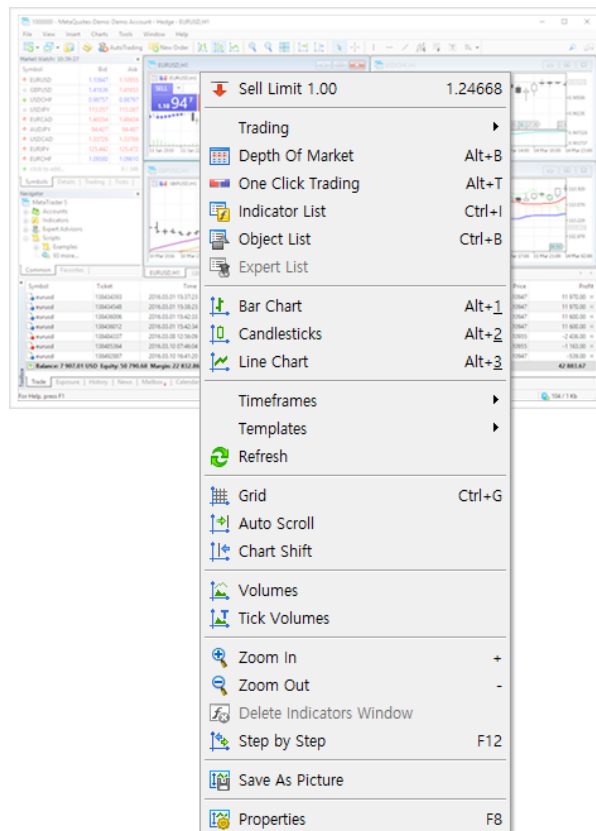
The trading platform has some predefined templates on which the graphs of all symbols can be modified. The templates are stored in the /Profiles/Templates directory in TPL files. Any template can be changed by saving the active chart window properties to it and can be applied to another symbol. In order to open the menu of working with templates, one should execute the "Templates" command of the "Charts" menu. Another advantage of the platform is the ability to save Profiles. A trading profile is a complete layout of the terminal interface, including the graphs (number, size, symbol) and their location. All profiles are stored in the /Profiles/Charts folder.

## 03. Use Mouse

- Clicking with the left mouse button on any point in the chart window and holding it with the subsequent horizontal moving of the cursor result in the chart scrolling.
- Clicking with the right mouse button on any point in the chart window results in calling on the chart context menu.
- Double-clicking with the left mouse button on elements of technical indicators calls the setup window of the corresponding indicator.
- Clicking with the right mouse button on elements of a technical indicator calls the context menu of the indicator.
- Click and hold to move the inserted objects.
- Click and hold the 'Ctrl' button to be able to draw trends.
- Clicking with the middle mouse button in the chart window switches cursor to the "crosshair" mode.
- Placing of the cursor on the bar close price or on an element of an object or indicator will call the prompt.

## Chart Menu Window

When you click right mouse button on the chart, menu appears as shown below



[Chart Property](#)[Chart Basic Setting](#)[Indicators](#)

### Trading

Execute new order window. Tools menu > New order or shortcut < F9 >.

### Depth Of Market

Open/close the "Depth of Market" window, in which requests closest to the market are published.

### One Click Trading

This option allows performing trade operations with a single mouse click on the "Trading" tab of the "Market Watch" window. If it is enabled, the "Buy" and "Sell" commands on this tab will send an appropriate instant request to the trade server. If this option is disabled, these commands will open a window of creating an order.

### Indicator List

Indicator List It shows inserted indicators on the chart and those indicators can be edited and deleted.

### Object List

Trend lines can be added/edited/deleted to the chart. a Chart Periods: There are 9 periods to select from 1min~1 Months.

### Bar chart

Switches the chart type to the Bar Chart. User can execute the same function with Icon button at the chart tools group.

### Candlesticks

Switches the chart type to the Candlesticks. User can execute the same function with charts-Candle chart or Icon button at the chart tools.

### Line Chart

Switches the chart type to the Line Chart. Alternate methods: Charts- Line charts tool group button.

### Timeframes

It sets period of the charts. User can select 1min, 5 min, 15min, 30min, 1 hour, 4 hours, 1day, 1week and 1month. Alternate methods: Icon > Click on `Tools` or Right click > chart -time frames.

### Templates

Templates can be stored/deleted.

### Refresh

Refreshes the active chart. Alternate method: Right click>Refresh.

### Grid

Displays the Grid Lines on the active chart. Alternate methods: Right click>Grid.

### Auto Scroll

cs\_tab\_window\_auto\_scroll\_descdd>

### Chart Shift

Setting space on the right side of the chart.

Chart Property

Chart Basic Setting

Indicators

#### Volumes

Volume located lower part can be inserted/deleted.

#### Tick Volumes

Tick Volume located lower part can be inserted/deleted.

#### Zoom in

Reduce chart size.

#### Zoom out

Enlarge chart size.

#### Step by Step

Shift the chart by one bar to the left.

#### Save As Picture

Save a chart as a picture file.

#### Properties

Chart window can be changed with this menu. User can change the background or color of the chart.



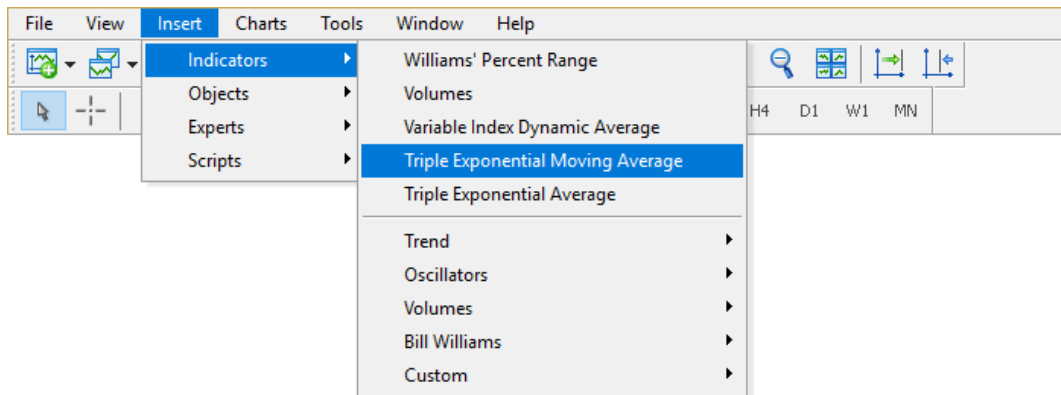
Technical indicators are a mathematical manipulation of a security price and/or volumes aimed at forecasting of future price changes. Decisions about how and when to open or close positions can be made on basis of signals from technical indicators. According to their functionalities, indicators can be divided into two groups: trend indicators and oscillators. Trend indicators help to assess the price direction and detect the turn moments synchronously or with a delay. Oscillators allow finding the turning moments ahead or synchronously.

User can customize indicators with MT5 Editor and apply other person's setting to the chart.

There are 2 ways to insert indicators to the chart.

### 01. Insert

Select a indices and insert to the chart at insert menu>Indicators.



### 02. Navigator window

'Navigator window' > Double click or drag drop with mouse required indicators

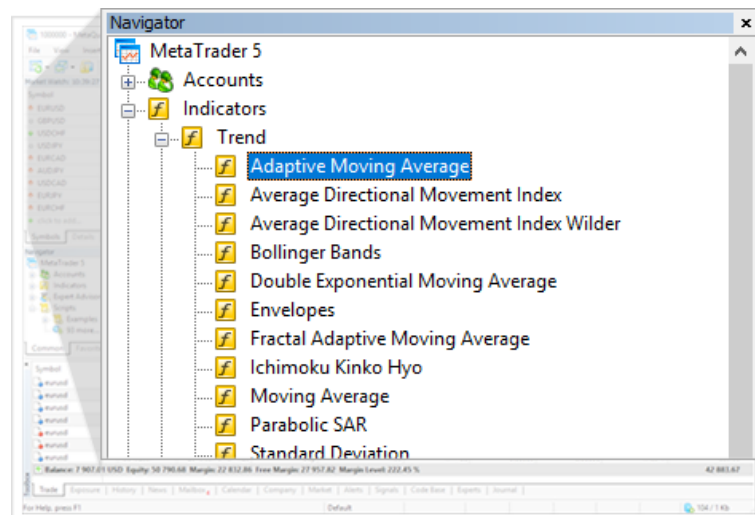


Chart Property

Chart Basic Setting

Indicators

You can modify indicators set up by Charts-Indicators or Right click -indicators and select edit and customize color, variables and properties. If you want delete indicators, you can use same methods. Select indicators – delete.

Accelerator Oscillator – AC
Accumulation/Distribution – A/D
Alligator
Average Directional Movement Index – ADX
Average True Range – ATR
Awesome Oscillator – AO
Bears Power Bollinger Bands – BB
Bulls Power
Commodity Channel Index – CCI
DeMarker – DeM
Envelopes
Force Index – FRC
Fractals Gator Oscillator – Gator
Heiken Ashi
Ichimoku Kinko Hyo
Market Facilitation Index – BW MFI
Momentum
Money Flow Index – MFI
Moving Average – MA
Moving Average Convergence/Divergence – MACD
Moving Average Oscillator – MAO
On Balance Volume – OBV
Parabolic SAR
Relative Strength Index – RSI
Relative Vigor Index – RVI
Stochastic Oscillator
Volumes
William’s Percent Range - %R
Zigzag

#### 4. USER OPTION

Server

Chart

Trend Line

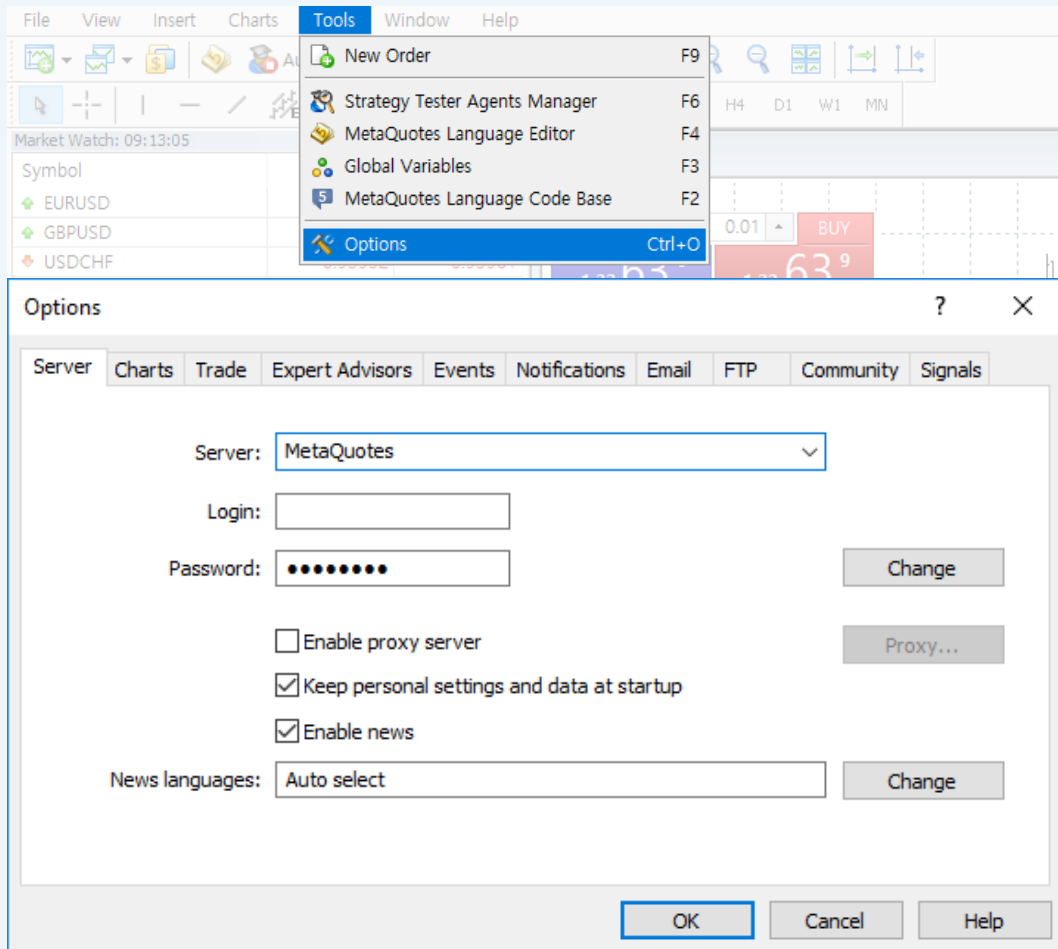
Expert Advisors

Server

Chart

Trend Line

Expert Advisors



### Server

It shows the connection information of appointed trade server it sets auto setting data center and in this status data center and test tab will become inactive.

### Enable proxy server

Save account details(number, main and investor passwords) onto a hard disk after an account is created. During the next terminal start these data will be used for the automatic connection. If this option is disabled, one has to enter these details manually each time starting the terminal. This option affects only the current account specified in the "Login" field.

### Keep personal setting and data at start up

Log in ID and password stored in MT5 and when you restart or just before close the program, chart, trend lines and index will be stored.

[Server](#)[Chart](#)[Trend Line](#)[Expert Advisors](#)

### [Enable News](#)

News receive YES/NO, Regarding Server/proxy server setting, I recommend to use basic option provided by MT5. Wrong option setting could make severe error.

### [News Languages](#)

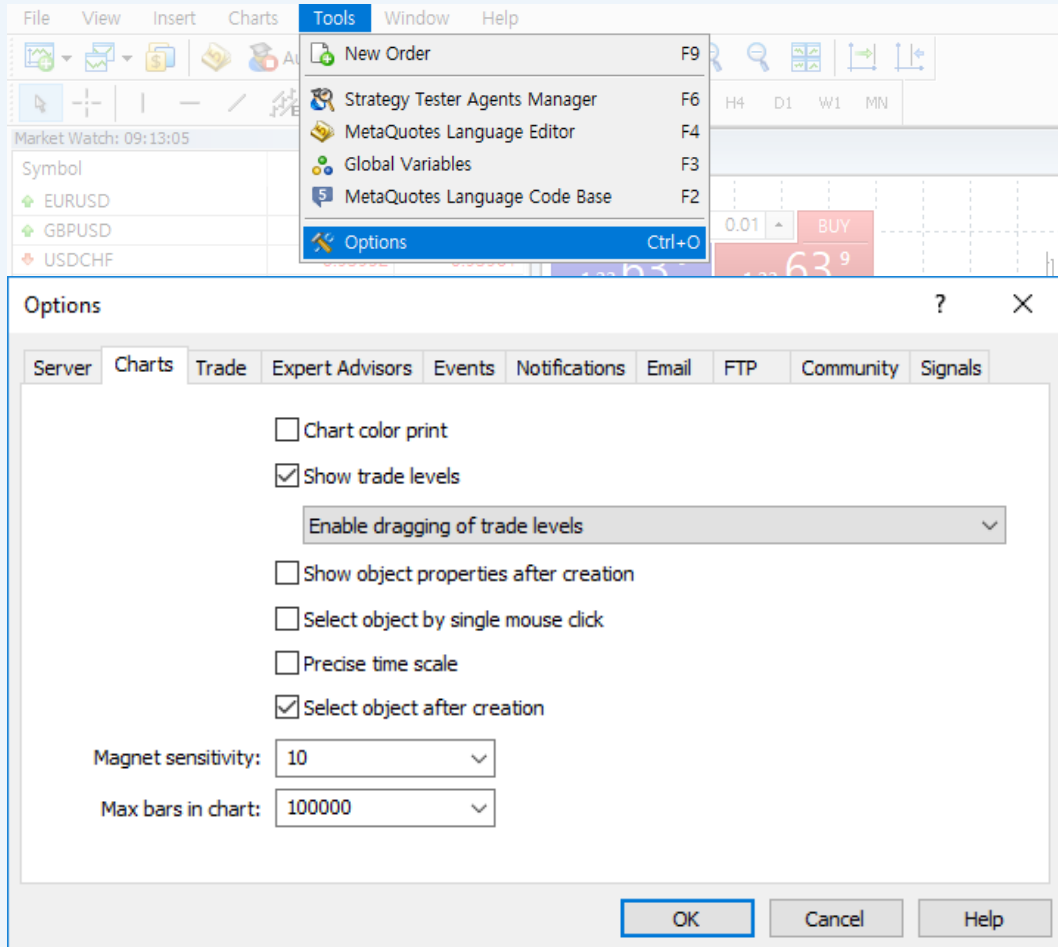
This option allows filtering news according to their language. A window of news language selection is opened upon clicking "Change". If "Any language" is selected in this field, all news independent of the language will be received.

Server

**Chart**

Trend Line

Expert Advisors



#### Chart Color Print

If the printer allows it, all charts will be printed in color. Save Deleted Charts to Reopen- terminal allows to restore charts deleted from the work space.

#### Show Trade Levels

If this option is enabled, price levels at which a position has been opened or a pending order has been placed, as well as Stop Loss and Take Profit levels are shown in the chart.

#### Select Objects by Single Mouse Click

Graphical objects in the terminal can be selected by single or double clicking of the left mouse button.

#### Precise Time Scale

If this option is disabled, the binding of objects along the horizontal scale of a chart is performed only by bars.

[Server](#)[Chart](#)[Trend Line](#)[Expert Advisors](#)

### [Select Object after Creation](#)

This option allows doing that automatically right after placing an object on a chart.

### [Magnet Sensitivity](#)

The terminal allows to "magnet" (anchor) checkpoints (except for the central moving points) of graphical objects to different bar prices to locate them more precisely.

### [Max Bars in Chart](#)

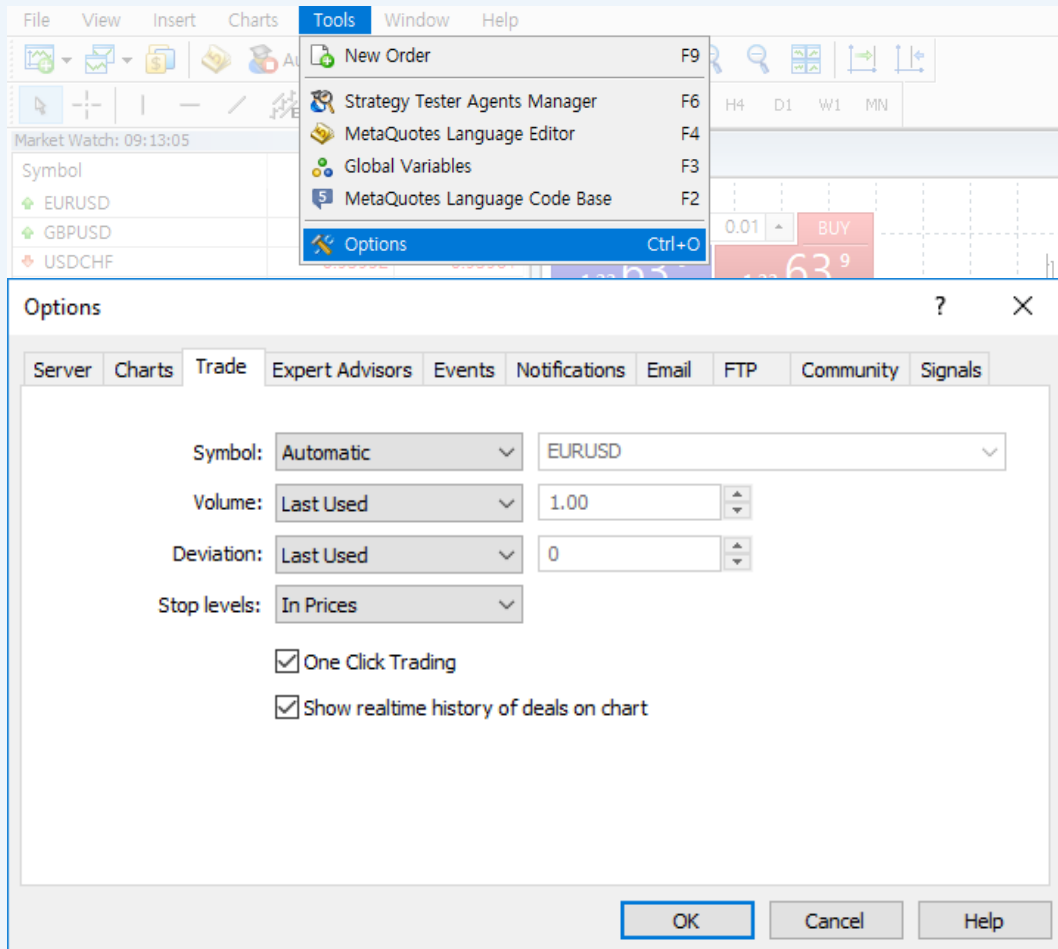
Bars stored in history and those shown in charts differ from each other. This difference is determined by the fact that any amount of bars can be kept in the hard disk provided that it has enough space. But the amount of bars shown in the chart is limited by the computer resources.

Server

Chart

Trend Line

Expert Advisors



### Symbol

This option allows to define a symbol specified in the position opening window. The "Automatic" parameter means that the active chart symbol will be set in this field, the "Last used" — the symbol of the latest trade operation. If "Default" parameter is selected, a certain symbol to be opened automatically each time can be specified in the activated field.

### Volume

This option allows to define a certain volume to be selected in the position opening window and in the "Trading" tab of the "Market Watch" window.

### Deviation

Allows making changes to the maximum deviation from the desired price for execution of a given order.



Server

Chart

Trend Line

Expert Advisors

### Stop Level

Properties of "Stop Loss" and "Take Profit" levels. They can be either "in points" or "in prices".

#### - One Click Trading

This option allows performing trade operations with a single mouse click on the "Trading" tab of the "Market Watch" window. If it is enabled, the "Buy" and "Sell" commands on this tab will send an appropriate instant request to the trade server. If this option is disabled, these commands will open a window of creating an order.

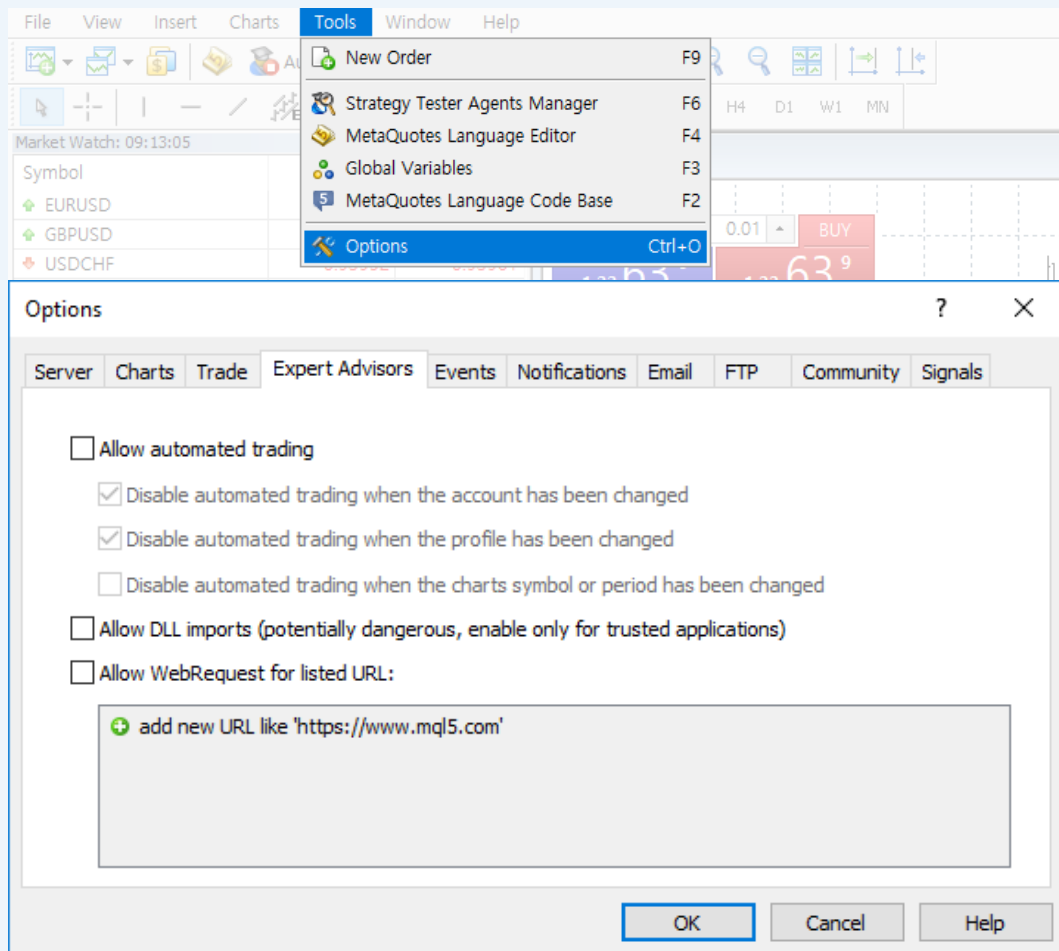
#### - Show Realtime History Of Deals On Chart

This option allows the real-time history of deals appears on the chart.

Server

Chart

Trend Line

Expert Advisors

### Allow Automated Trading

This option allows to enable or disable the performing of trade operations by Expert Advisors and scripts. If it is disabled, scripts and Expert Advisors will work, but they won't be able to trade.

#### - Disable Automated Trading When the Account has been Changed

This option represents a protective mechanism disabling trading by Expert Advisors and scripts when the account is changed. It is useful, for example, when one changes demo account for a real one.

#### - Disable Automated Trading When the Profile has been Changed

Having enabled this option, one can hinder the trading by the Expert Advisors launching when the profile has been changed.

#### - Disable Automated Trading When the Charts Symbol or Period have been Changed

If this option is enabled, then when the period or symbol of a chart is changed the expert advisor, which is attached to it, will be automatically prohibited to perform trade operations.

[Server](#)[Chart](#)[Trend Line](#)[Expert Advisors](#)

---

#### [Allow DLL Imports](#)

To extend their functionality, mql5 programs can use DLL libraries. This option allows determining a default value for the "Allow DLL imports" parameter when starting programs. It is recommended to disable import when working with unknown Expert Advisors.

#### [Allow Web Request For Listed URL](#)

This option allows web request from the list of URL.

## 5. SYSTEM TRADING

System Trading Execute(EA)

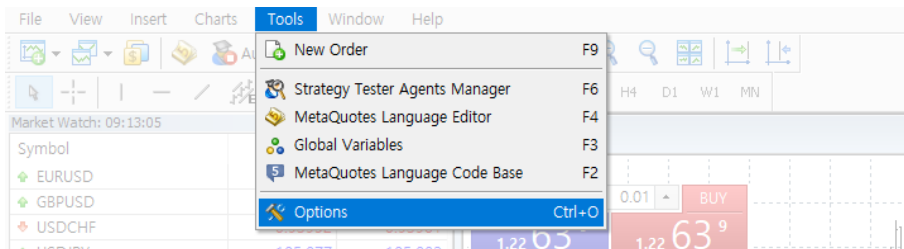
System Test

## System Trading Execute(EA)

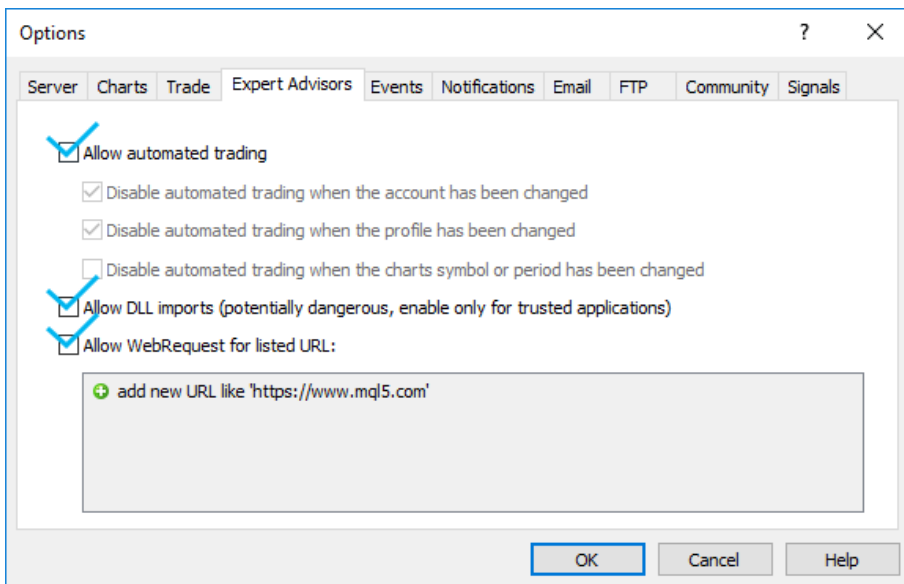
## Strategy Test

The following sequence enables you to run Auto-trade OR System trading (EA) and test your strategy.

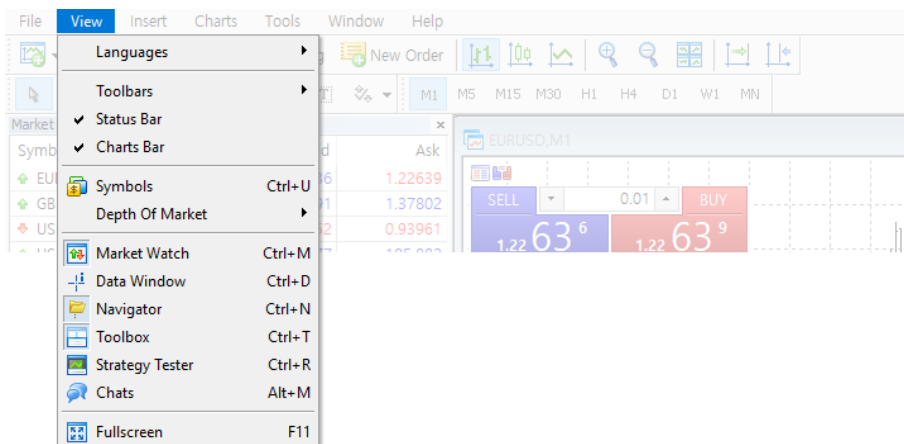
01. Setting system trading. Click 'options' at the tools menu.



When option window appeared, choose 'Expert Advisors' tab and click 'Allow Auto Trading' after that click 'DLL imports'.



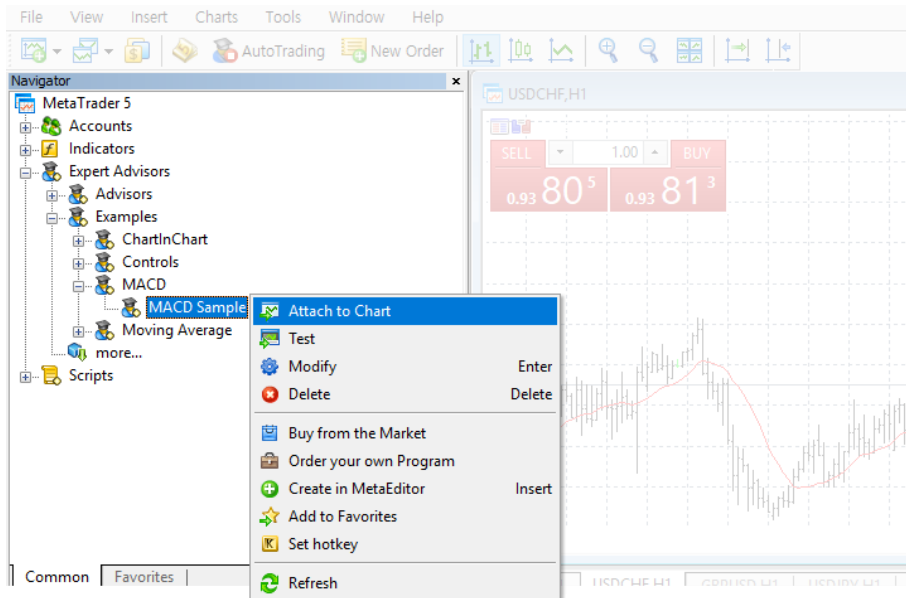
02. System trading strategy basically composed of 8 EA included as a sample of MT5. Open navigator at the view menu.



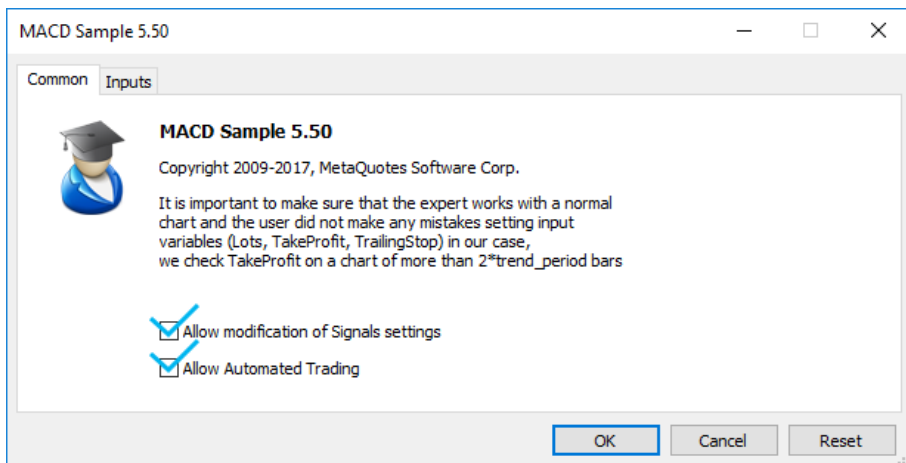
## System Trading Execute(EA)

## Strategy Test

When navigator window open, click 'Expert Advisors' – 'Examples' – 'MACD'.  
Select MACD sample Click > 'Attach to a chart'



When the chart enclosed, you can see the window as below. If you completed the setup at the option window, you can see 'Allow Automated Trading' already ticked. If you think every menu is ticked \correctly press confirm.

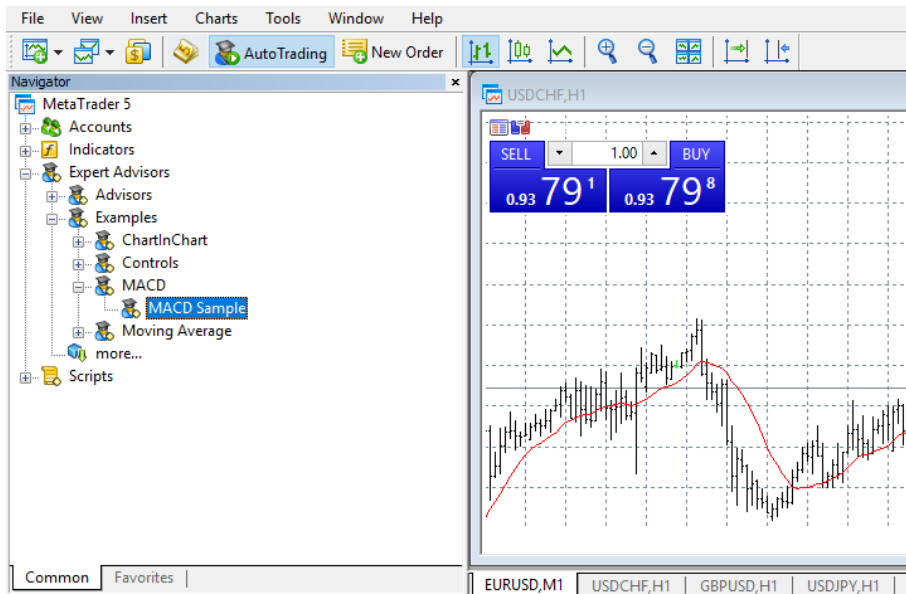


## System Trading Execute(EA)

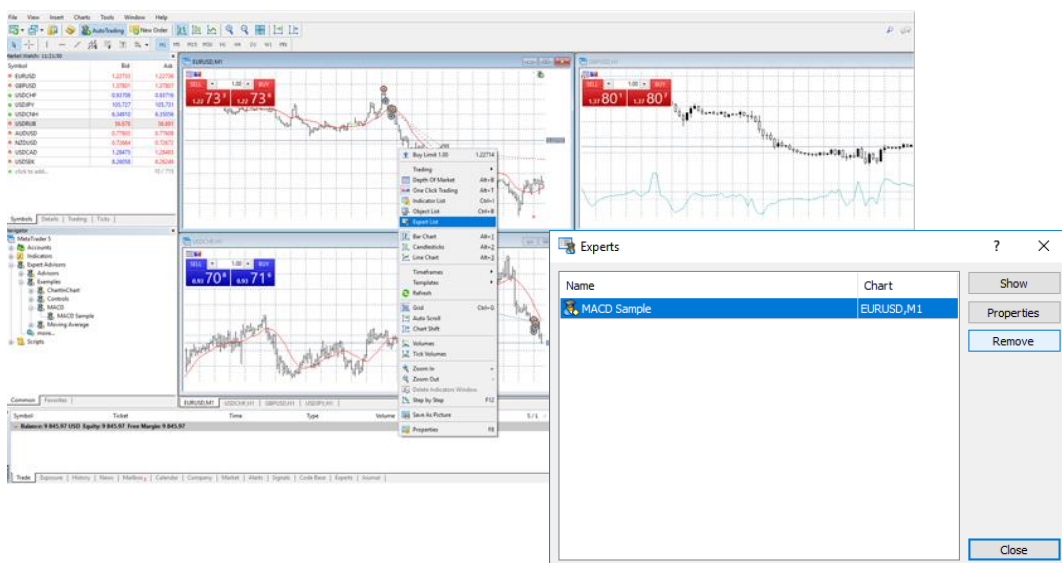
## Strategy Test

03. Setting are now completed. To start system trading, you need to do the final step. You will be able to see Auto Trading with at the toolbar. It is means not active yet.

You should press Auto Trading button when you start EA.



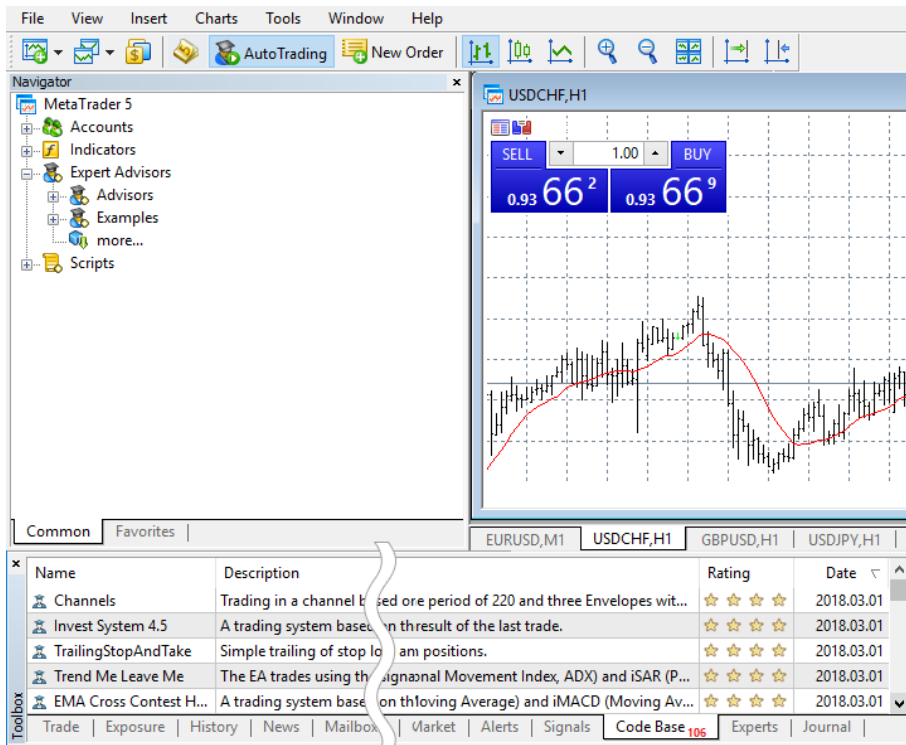
04. If you want to delete on chart, click the right button of the mouse then you can see 'Expert List' Press 'Remove' button for deleting EA program from you chart.



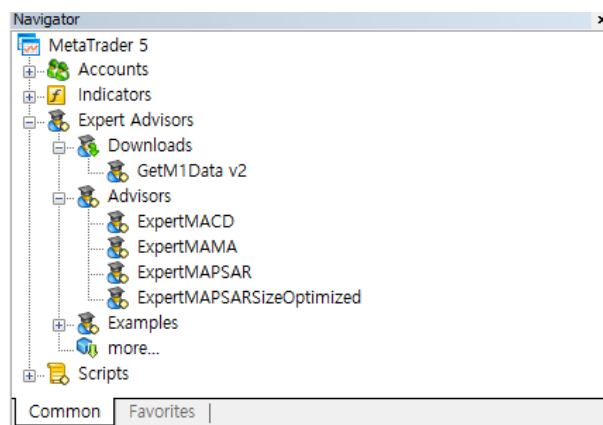
## System Trading Execute(EA)

## Strategy Test

05. EA Addition: When you double-click 'more' on the Navigator, the Code base at the on the toolbox appears. You can choose and download it by double click or right click – Download.



06. You can see your downloads file on you Navigator. You can apply this EA program right away.

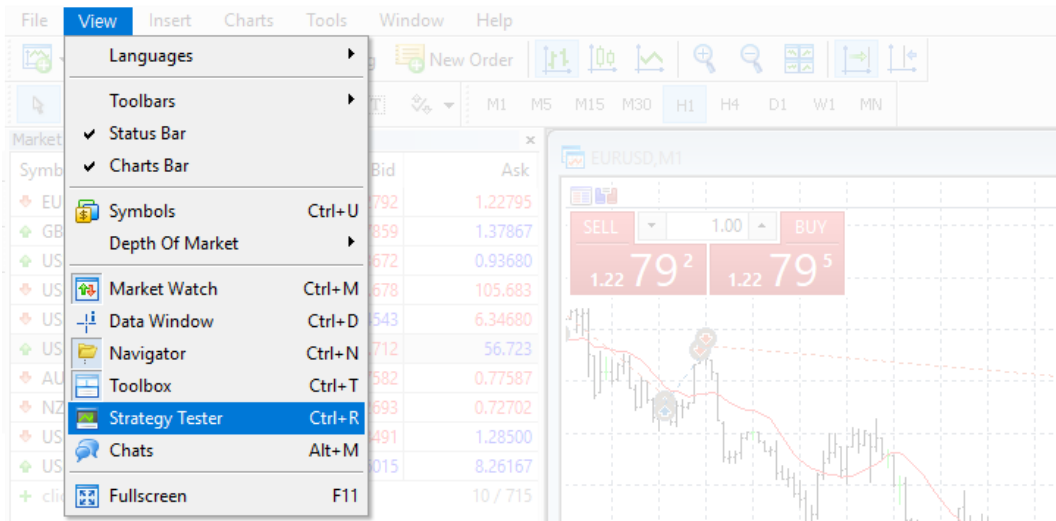




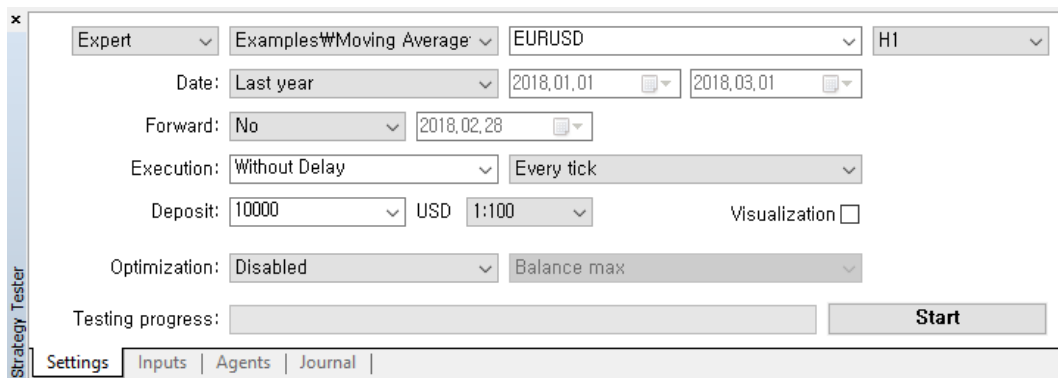
System Trading Execute(EA)

Strategy Test

Run a strategy test on the view as follows.



The 'Strategy Tester' window will open as follows.



Menu description is as follows

01. **Expert or Indicator** : Choose what kind of test you will use
02. **Currency** : Choose currency pair to test.
03. **Period** : Choose a time period to test(M1 ~ Monthly)
04. **Date** : Choose a date to test
05. **Forward** : Choose a date by period
06. **Execution** : Choose your test execution speed
07. **Deposit** : Choose your deposit and leverage
08. **Visualization** : Test shows a screen like real market Button
09. **Optimization** :Testing of the EA on history data with different sets of parameters, aimed at finding their best combination. During multiple runs, different combinations of the input parameters of the EA are tried and the best ones are selected. Note that an EA must have some input parameters that can be optimized like take profit, trailing or technical parameters like period etc.
10. **Testing progress** : Show the progress of test

System Trading Execute(EA)

Strategy Test

When you press the start button, the test starts as follows.



When the test finished, you can receive the result of strategy test and the data of graph.

## 6. ETC OPTION










Shortcut

Indicators

## Shortcut

## Indicators

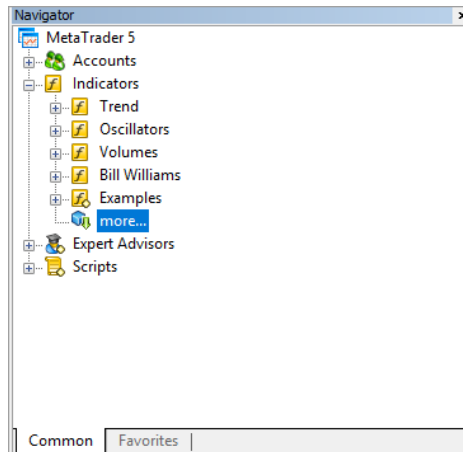
The main features of the MT5 are conveniently executed using the following shortcut. Each of the indicators is also available by designate a shortcut on the 'Navigator'.

	Chart move to the left		Execute chart control screen
	Chart move to the right	 or 	Delete cancel
	Chart move to the left fast		Initialize all indicators screen height.
	Chart move to the right fast		Open trend lines lists
	Move chart to the initial position (Right)		Expert advisor activate/inactivate
	Move chart to the end (left)		Execute cross line
	Zoom out chart		View grid
	Zoom in chart		View initial/high/low/end prices
	Delete index added just before.		Open indicators window
	Execute user's manual		Chart print
	Execute records		Store chart in the form of "CSV", "PRN", "HTM"
	Meta editor start	 or 	Close chart
	Execute chart properties window		View time frame line
	Open new order window		Open data window
	Execute pop-up currency window		Open currency prices window
	Chart full screen		Open navigator
	Move chart to the left slowly		Execute option
	Move chart to the right slowly		Open strategy tester window
	Bar chart		Open terminal window
	Candle chart		Pass to the next chart
	Line chart		Move to 'toolbox' – 'trade' tab

Shortcut

Indicators

01. Double click more from 'Navigator – Indicators'



02. You can see indicators from 'Toolbox – Code Base'.

Name	Description	Rating	Date
<input checked="" type="checkbox"/> Vector	An oscillator of market movement, mood and trend.	☆☆☆	2018.03.01
<input checked="" type="checkbox"/> Patterns	A set of thirty popular candlestick patterns.	☆☆☆	2018.03.01
<input checked="" type="checkbox"/> Other_Candles	The indicator draws candlesticks in a separate window in the form of a histogr...	☆☆☆	2018.03.01
<input checked="" type="checkbox"/> MinMax_MA	A moving average based in High and Low prices.	☆☆☆	2018.03.01
<input checked="" type="checkbox"/> MACD_Signal_Di...	The indicator searches for divergences and displays them on the chart of the s...	☆☆☆	2018.03.01
<input checked="" type="checkbox"/> MACD_Divergen...	The indicator searches for divergences and displays them on the chart of the c...	☆☆☆	2018.03.01
<input checked="" type="checkbox"/> GeoMean_MA	Geometric Mean Moving Average is a simple moving average calculated by th...	☆☆☆	2018.03.01
<input checked="" type="checkbox"/> D_Oscillator	RSI+ CCI in one window.	☆☆☆	2018.03.01
<input checked="" type="checkbox"/> BB-Decimal	Colored Bollinger Bands	☆☆☆	2018.03.01
<input checked="" type="checkbox"/> AO_Divergence	The indicator searches for divergences and displays them on the chart of the c...	☆☆☆	2018.03.01
<input checked="" type="checkbox"/> ZeroLagMACD	ZeroLagMACD is an MACD version, which has a much smaller lag compared t...	☆☆☆	2018.03.01
<input checked="" type="checkbox"/> ZeroLag	Zero Lag is a modified EMA.	☆☆☆	2018.03.01
<input checked="" type="checkbox"/> WI	The WI oscillator indicator.	☆☆☆	2018.03.01

Trade | Exposure | History | News | Mailbox 7 | Calendar | Company | Market | Alerts | Signals | Code Base

03. When you click right button of mouse, you can download indicator whatever you need.

Name	Description	Rating	Date
<input checked="" type="checkbox"/> Vector	An oscillator of market movement, mood and trend.	☆☆☆	2018.03.01
<input checked="" type="checkbox"/> Patterns	A set of thirty popular candlestick patterns.	☆☆☆	2018.03.01
<input checked="" type="checkbox"/> Other_Candles	The indicator draws candlesticks in a separate window in th	☆☆☆	2018.03.01
<input checked="" type="checkbox"/> MinMax_MA	A moving average based in High and Low prices.	☆☆☆	2018.03.01
<input checked="" type="checkbox"/> MACD_Signal_Di...	The indicator searches for divergences and displays them c	☆☆☆	2018.03.01
<input checked="" type="checkbox"/> MACD_Divergen...	The indicator searches for divergences and displays them c	☆☆☆	2018.03.01
<input checked="" type="checkbox"/> GeoMean_MA	Geometric Mean Moving Average is a simple moving avera	☆☆☆	2018.03.01
<input checked="" type="checkbox"/> D_Oscillator	RSI+ CCI in one window.	☆☆☆	2018.03.01
<input checked="" type="checkbox"/> BB-Decimal	Colored Bollinger Bands	☆☆☆	2018.03.01
<input checked="" type="checkbox"/> AO_Divergence	The indicator searches for divergences and displays them c	☆☆☆	2018.03.01
<input checked="" type="checkbox"/> ZeroLagMACD	ZeroLagMACD is an MACD version, which has a much sma	☆☆☆	2018.03.01
<input checked="" type="checkbox"/> ZeroLag	Zero Lag is a modified EMA.	☆☆☆	2018.03.01
<input checked="" type="checkbox"/> WI	The WI oscillator indicator.	☆☆☆	2018.03.01

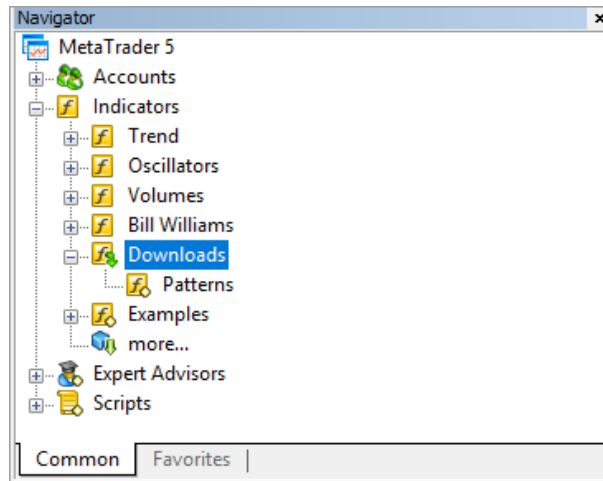
Trade | Exposure | History | News | Mailbox 7 | Calendar | Company | Market | Alerts | Signals | Code Base

Context menu for 'Patterns': View, Download, Order your own Program, Expert Advisors, Indicators, Scripts, Auto Arrange, Grid.

Shortcut

Indicators

04. When you download indicator, it appears on 'Navigator – Indicators – Downloads'



05. Indicator is applied in the chart automatically. If you want to find more indicators, you can access [MQL5.com](http://MQL5.com) by search.